

networking

BRINGING THE LIGHT OF CHRIST INTO COMMUNITIES

Hope for the future

“For I know the plans I have for you,” declares the Lord, “plans to prosper you and not to harm you, plans to give you hope and a future”

Jeremiah 29:11

Lifting their voices

Our first Children and Youth Advocate will be responsible for giving children and young people a greater voice.

What it's like in their world

A new product enables participants to experience the physical and mental challenges faced by people living with dementia.



Churches
of Christ
in Queensland

{ Contents }

Find us on 



9



8



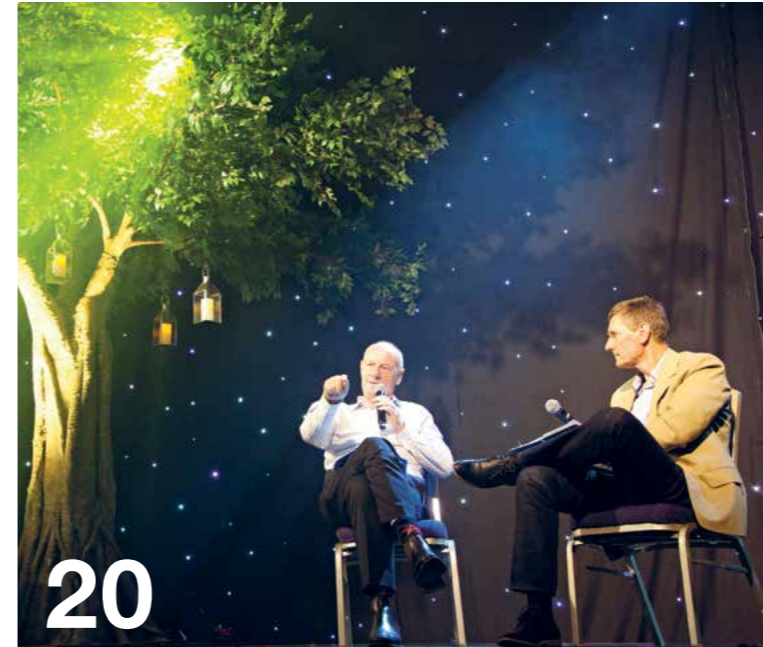
18



15

“When Jesus spoke again to the people, he said, I am the light of the world. Whoever follows me will never walk in darkness, but will have the light of life.”

John 8:12 (NIV)



20



30



24



39

From the Editor	4
Chief Executive Officer update	5
Spiritual Mentoring: Companionship Souls	7
Church of the Outback	8
Donations continue life of mission	9
Lifting their voice	10
It could happen to any of us	12
Gladstone's Shed 19 open for the community	14
A playground for all	15

Zillmere celebrates 135 years	16
Kenmore Campus - ready for the future	17
Hope for future managers	19
Celebrating the first Australians	20
Young, vulnerable and marginalised	22
What it's like in their world	24
Pantry Assist - Church of Christ, Annerley	26
CYCLE: Practical hope for young people	27
Hope for the hurting	28

Research paves way for better care	30
Annual Centrifuge conference round up	31
After the beginnings	32
Gidgee's enterprising ways	33
People and Events	34
Hope for the future in the toughest of places	36
Holiday travel to the Holy-lands	37
Events	39

networking

Churches of Christ in Queensland
41 Brookfield Road Kenmore Qld 4069
PO Box 508 Kenmore Qld 4069
07 3327 1600
communications@cofcqld.com.au

networking contains a variety of news and stories from across Churches of Christ in Queensland. Articles and photos can be submitted to communications@cofcqld.com.au. The submission deadline for the next edition of *networking* is 6 November 2017.

Pacesetter Laser Recycled is 30% recycled and made from elemental chlorine free bleached pulp sourced from sustainably managed sources. It is manufactured by an ISO certified mill.





Editor's update

Welcome to this edition of *Networking*. There is so much to be hopeful for about the future. While daily we see turmoil in the world, and find ourselves responding to people in the greatest of needs, the fact that we are here, able to help and able to give individuals and families a sense of hope that a better future is around the corner, is very special.

Here's a quick snapshot of some of the key activities across our mission services and for up and coming events. You will also read throughout this publication stories from churches.

We work with children and young people and give them hope for their future through our Children, Youth and Families Services. And with the introduction of our Children and Youth Advocate Jane Carter, we are hoping to give a greater voice to those who so often go unheard.

Through another new initiative we are trying to give an experience of what it is like for people who live with dementia. In June we launched the ground-breaking Virtual Dementia Tour® with its creator from the United States, P.K. Beville. Grounded in research, the 'tour' allows participants to experience what it is like to live with dementia. It is a truly awakening experience to understand how people with dementia sense the world.

This year there've been two opportunities for people to join with us in responding to real needs in our communities and we have been encouraged by the generous response of individuals, churches and businesses. In April, our Flood and Cyclone Appeal to

aid those impacted by Tropical Cyclone Debbie and the associated extreme weather event, raised over \$11,000. In June, our End of Financial Year Appeal to support the work of Community Chaplains raised just over \$8,400.

Thank you to everyone who has partnered with us to bring relief and comfort to those in our communities who are struggling because of difficult life circumstances or the impact of Cyclone Debbie. Your generosity and involvement has made not only a practical difference, but given an emotional boost to those who are struggling as they realise people care.

ANNUAL GENERAL MEETING AND MINISTERS FORUM 16-17 NOVEMBER

We will be hosting our Annual General Meeting and Minister's Forum in November. These two events will, for the first time, be held at Kenmore, in the new auditorium and function space on the campus. More detailed information has been circulated, and you can visit cofc.com.au/ministersforum.

COMING HOME, MOVING FORWARD – OUR NEW CHIEF EXECUTIVE OFFICER

In early July we welcomed our new Chief Executive Officer Dr Paul Scully – you can read his biography here and first editorial on the next page.

For Paul, his new role is, in many ways, a homecoming.

While for the past number of years Paul has been living and working in Adelaide as Chief Executive Officer of Baptist Care South Australia, his roots are in Queensland, and in Churches of Christ.

Paul completed his initial theological training at Kenmore Christian College in 1984, now the site of the Head Office. After his training, he served as a Minister

“You can develop a healthy, robust community that lives right with God and enjoy its results only if you do the hard work of getting along with each other, treating each other with dignity and honor.”

James 3:18 (MSG)

with three Church of Christ congregations in metropolitan and regional Queensland.

Board Chair Gary Edwards welcomed Paul to the role, saying he brings a wide breadth of experience, vital to continue the organisation's growth trajectory.

“Paul has held positions with UnitingCare Queensland and, most recently, as Chief Executive Officer of Baptist Care where he oversaw a period of considerable expansion and re-engagement of care services with local congregations,” Gary said.

“This is exactly the sort of experienced leadership we need to continue our growth and fulfil our vision and mission.”

Paul has a Doctorate of Ministry from Fuller Theological Seminary in the United States, Masters Degrees in Pastoral Care and Counselling, a Bachelor of Arts and a Bachelor of Theology. He is a Fellow of the Australian Institute of Management and has been recognised for his leadership by being named as the Not-for-Profit Manager of the Year for 2015 in AIM's Excellence Awards for South Australia.

In his new leadership role, he will be responsible for the strategic direction of nearly 70 Queensland churches and the delivery of hundreds of mission activities and care services to tens of thousands of Queenslanders, Victorians and ni-Vanuatu. He said the diverse range of services and the geographic spread are both challenges and blessings.

“I look forward to getting out and meeting as many of our people as possible,” Paul said.

“Churches of Christ not only feels like home to me, it also has a good reputation throughout the country and beyond for its innovative delivery of church and care services.

“This comes down to those at the front line, those in our churches, care services and on the ground. Whether they are a church member, staff, resident, client, carer or volunteer, they are all part of something big, something special.

“Where Churches of Christ is now is a testament to the vision of the current leadership and I seek to continue to deliver on their strategic direction.”

I hope you enjoy this edition of Networking as we explore 'hope for the future'.

Desley Millwood
Director - Public Relations and Communications

Chief Executive Officer update

It has been a delight to discover the breath of ministry and care being delivered by Churches of Christ in Queensland. I have spent the first few months listening to folk from the churches and services as they share their story. During my time so far I have visited out west including Cunnamulla and St George as well as going north, visiting Townsville, Cairns and the Tablelands. I am encouraged and excited to experience people's passion to deliver exceptional care and sometimes unique activities such as the street chaplains in Cairns supporting locals and tourists. In a number of locations I have visited such as Maryborough, Bribie Island and Townsville I heard about the men's sheds ministry reaching people who would not normally come to church. It was great to see the innovation in our services such as Blackall, where the residential aged care service is building a garden for dementia residents so they can enjoy the outdoors.

In my role as Chief Executive Officer, people have asked what is the vision for the future?

The question is a good one and I would respond by asking, “What is God wanting to do today?”

I think the purpose of the church has not changed. First, it is for His people to be transformed to be like Jesus. Second, in being transformed it is for church to be a body and not a collection of individuals working together to serve others. In being transformed individually and collectively we seek to be “salt” and “light” to the world. I think of great saints of the past like William Booth, John and Charles Wesley, Florence Nightingale and many more whose purpose was to serve others sacrificially and with compassion. In doing so they transformed their generation.

When I think of the people I have met in the past months I see transformed people wanting to transform their workplace and communities, this is

what God wants us to do today. It means getting out of our comfort zone and taking a risk sometimes because we care for others more than we care for ourselves.

I would like to thank David Swain, the Executive Team and the Council and Board for their guidance over the first months in helping me gain a renewed understanding of the Churches of Christ in Queensland.

It is a privilege to serve as the Chief Executive Officer and collectively I pray we can continue to touch the lives of people in Queensland, Victoria and Vanuatu with the hope of Christ and demonstrate His love in our service to others.

I look forward to meeting more of you in November either at the Ministers Forum or the Annual General Meeting.

Dr Paul Scully
Chief Executive Officer



GOOD NEWS

Regular readers will be aware that Dean Phelan stepped down as Chief Executive Officer of Churches of Christ in Queensland, and Chair of Churches of Christ in Australia earlier this year, after a number of months of hospitalisation for Acute Myeloid Leukaemia.

Dean has undergone intensive chemotherapy followed by a bone marrow transplant. A series of tests is conducted 100 days after transplant, and Dean and Janette received great news this week that total remission had been achieved with no signs of cancer and 100% engraftment of the new stem cells donated by his sister.

Dean will continue to be monitored and supported with medication for another year or two. He goes forward with faith and immense

thankfulness to everyone for their prayers, encouragement and support on what has been a difficult journey.

Dean's strength is returning and he is currently co-authoring a book with Dr Andrew Menzies, Principal of Stirling, Churches of Christ's national theological college – working title: Communities of the Kingdom – A Blueprint for Mission due out early next year.

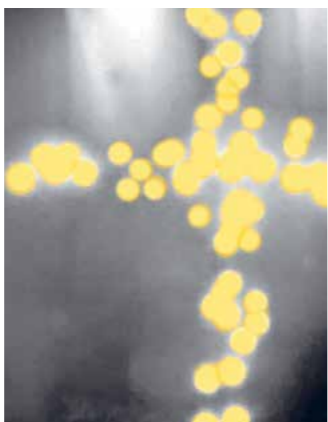
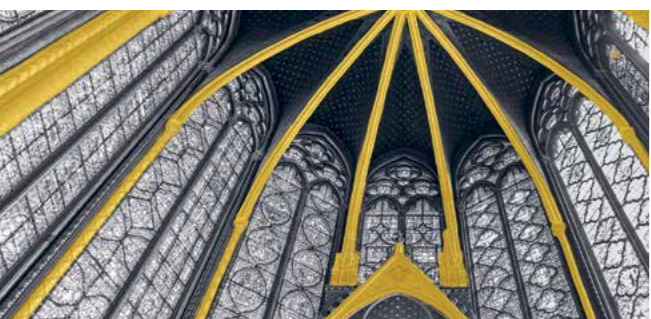
2017 Ministers Forum

content | conversations | connection



FIND OUT MORE COFC.COM.AU/MINISTERSFORUM

16-17 NOVEMBER 2017



YOU MAKE BEAUTIFUL THINGS



THURSDAY
16 November 2017

Plenary Sessions
4 - 5:30pm
Annual General Meeting
6:30pm

134th
annual
GENERAL
meeting

Spiritual Mentoring Companioning Souls

The Deeper Rhythms Team has partnered with the Australian College of Ministries (ACOM) to facilitate a renewing and equipping two year journey of learning, experience and practice through the Spiritual Mentoring course. This special course, taking place over six, three-day retreats throughout 2018-19, will form and equip you to be a better spiritual companion and mentor. Jennifer Woodley (pictured), a graduate of the course, said the Spiritual Mentoring course gave her the opportunity to learn and practice mentoring skills and to connect with others completing the course.

"I appreciated the opportunity to both mentor others and be mentored through real life situations. As a result we were able to encourage each other," Jennifer said.

"I learnt that despite our differences and backgrounds, our life struggles are not so very different and we found commonality and connection in this. A number of close, lasting friendships have been formed."

Attendees may do this for the experience only, or enrol with in a Graduate Certificate in Arts through the Deeper Rhythms Learning Centre. The course will discuss four units of learning: Introduction to Christian Spirituality; Spiritual Mentoring; Discerning God's Will Together; and Spiritual Formation. This training pathway is provided in partnership with the ACOM, a Member Institute of the Sydney College of



Divinity, which offers internationally recognised higher education awards.

The course can assist those, like Jennifer, who are called to mentoring. While touching into your own spiritual journey, you will: explore and practice various spiritual disciplines; have practise sessions of companioning; learn how to use your unfolding life story in connecting with God; practise different ways to listen and ask questions; and experience different approaches to discernment.

It gives you a place to share your own questions and alternative suggestions on the mentoring process and will help articulate who can be best mentored, and can help shape you and the way you mentor, allowing you to find your own personal ways of mentoring.

Jennifer appreciates the experiences the Spiritual Mentoring course has given her.

"I finished the course assured that my formation journey is the most valuable asset I have and the transforming self is the most valuable asset I can offer to another. I have a clearer perception that my life is about being chosen, blessed, broken and then given by God for the sake of others," Jennifer said. ■

“
I finished the course
assured that my
formation journey is
the most valuable
asset I have and the
transforming self is the
most valuable asset
I can offer to another
”



For expressions of interest, please contact Bruce Warwick from the Deeper Rhythms Team, bruce.warwick@cofcqld.com.au or 0418 363 604; or contact Stephen Parker from ACOM, sparker@acom.edu.au or 0410 614 894.

Church of the Outback

In rural and remote Queensland the tyranny of distance for the faithful means that many are not able to join others in prayer at a church. But through Aussie ingenuity, outback Christians are able to join together.

Trevor Mears founded the Church of the Outback (also known as the Outback Church of Christ, Phone Fellowship or Phone Church). After receiving his pilot's licence (from renowned outback artist Pro Hart, no less), he started travelling around the outback and realised that there was "a great need for consistent pastoral support for isolated Christians."

In 1980, he left his ministering position in Broken Hill to minister with the Dalby, Queensland Church of Christ, where he agreed to deliver a flying ministry to isolated Christians.

"In 1986, after many flying trips to the outback communities, I finished ministry with the Dalby Church and established a faith ministry, Outback-Christians-in-Ministry," Trevor said.

While listening to a radio broadcast about the new Telecom conference call service, Trevor realised that this could



■ Above: Trevor up early on a winter's morning to facilitate the Church of the Outback.

be the way in which isolated Christians could get together on a regular basis and minister to one another, reducing the need for his resource-hungry plane visits. In 1987 a fortnightly church service via conference call commenced. In 1991, the outback ministry became affiliated with Churches of Christ in Queensland, and found itself with a new moniker.

"As word spread, up to five services were being held each Sunday, with up to 60 people in some services."

Today, the Church of the Outback continues to provide the opportunity

for people to be able to connect spiritually and to know that they are cared for through a weekly telephone conference call, with Pastor Alan Frankham at the helm.

"We currently have two congregations who meet on a Sunday; the first group do all the normal things that you would encounter attending a local church – except via the phone," Alan said.

"The second group is where the truths of the Bible are considered in a discussion group, just as though participants were sitting around in a lounge room together."

The church went one step further in 2016 by extending care for one another from a telephone call to face-to-face pastoral visits with people in remote locations.

"Church of the Outback is led by people who know what it is like to live remotely and experience the issues of educating their children when distance separates these families from many facilities enjoyed by families in the city," he said. ■



Donations continue life of mission

For Churches of Christ Medical Santo to deliver its vital, life-saving medical service to the people of Northern Vanuatu, it relies not only upon the generous donation of individuals' time through volunteering, but also the generous donation of funds.

Medical Santo does not receive any government funding, with the service relying on donations from individuals and organisations.

Pauline Reinersten makes regular donations to Medical Santo. For Pauline, she wants to see the service be able to continue to deliver the type of care that she was privileged to provide for decades as a nurse in the archipelago nation.

When Pauline was 20 years old, she decided that she would like to travel while also perfecting her nursing skills before she married. Through the grapevine, she heard that India would be a great place for her to start, so applied to go as a missionary. After being approved to go to India, she was approached to go to Vanuatu where it was felt the need was greater at the time.

Pauline understood she would follow her faith in God and go to Vanuatu. In 1949 Pauline arrived by boat to Maevo, one of the islands in the Penama Province of northern Vanuatu. She was given a bamboo house on stumps, with a wooden floor in which to live. She remembers that there were millipedes everywhere and she would often hear the animals of the island at night. After a stint at the local school, which helped her settle into the community, Pauline's ongoing job was giving vaccinations and helping the pregnant women of the island.

There are plenty of stories to tell about the daily happenings in Pauline's role, but the main ones she can remember and talk about involve earthquakes and cyclones and the other missionaries who did so much for the people of Vanuatu. Pauline had malaria a couple of times and treated herself; she lived through many natural disasters, which added to the adventure. Her only regret was hearing about her mother passing away by telegraph and not being able to attend the funeral.

Pauline said that her time in Vanuatu from 1949 to the early 1960s was the best and most rewarding years of her life. When she returned to Australia, she continued her missionary work. Pauline's faith in God is strong and she regularly attends her local Church of Christ services, and makes a big effort to remain connected with the many friends she has made here in Australia and around the world.


Her donations support the work still being done in northern Vanuatu through the provision of medical services and health programs by Medical Santo. ■



■ For over a decade from 1949 Pauline gave herself as a missionary on Vanuatu and continues to help today as a donor to a medical centre.

Donate today: 1800 600 900 or give@medicalsanto.com

Your donation makes such a huge difference to people in Vanuatu.

 **The Church of the Outback is a conglomerate of Christians from almost all denominations gathering together to encourage one another in their faith** 
Trevor Mears

One in 33 Australian children (162,175) received child protection services during 2015-16, according to the Australian Institute of Health and Welfare.

Many of these children and their individual issues are simply not being heard. But we are doing our bit to ensure that society's most vulnerable members have a voice and are heard.

In May, Churches of Christ in Queensland appointed Jane Carter as the inaugural Children and Youth Advocate.

In this ground-breaking new role, Jane is responsible for ensuring that every child and young person that comes in contact with our mission services both feels safe, and is safe, from all forms of harm.

At the time, in the role of Acting Chief Executive Officer, David Swain said the Advocate role was critical given the increasing need for children and youth to be heard by authorities and the community.

"We are operating at a time where significant focus is being applied to how we, as a community, ensure the safety of our children and young people, whether that be in institutionalised care settings, churches, or other environments," David said.

"Organisationally, we care for some of the most vulnerable children and young people in society, those whose voice isn't always heard, which places them at even greater risk of harm.

"The Children and Youth Advocate will ensure they have a voice and are heard within the organisation, by government and the community.

"Jane will be working with us, and holding us to account on our commitment of being a child safe organisation."

Jane has been with Churches of Christ for over 20 years. In that time she has served as a teacher, early childhood service manager, operations manager, and general manager of Children, Youth and Families before accepting her current high profile advocacy role. She said that the advocate role was an industry first and is critical to ensuring the best interests of children.

"I will be appropriately advocating for the best interests of children and young people within, and for, our churches and care services," Jane said.

"This includes ensuring our care services, where relevant, are child and young person focused; that the best interests of children and young people are appropriately advocated for both within our organisation, and outside of it; and that we appropriately respond to recommendations of the Royal Commission into Institutional Responses to Child Sexual Abuse.

"It is simply not sufficient for young people to be physically safe, but to still feel as though they are not in a safe place. They need to be secure in both their physical and emotional environments, they need to be safe and feel safe. It is not enough to only respond when things go wrong.

"We need to be proactive, we need make sure we hear the voice of children and young people as we are running our organisation. And we need to make sure we keep their safety at the heart of everything we do."

Churches of Christ in Queensland is one of the largest non-government providers of children, youth and family services in Queensland. We provide assessment and intervention services, foster and kinship care and residential and supported independent living services to over 3,700 children and young people each year. ■



Lifting their voice

As the inaugural Children and Youth Advocate, Jane Carter will be responsible for giving vulnerable children and young people a greater voice.

Child protection - make it your business

Child protection week was held 3-9 September. The ongoing, key theme for the important awareness week is "Child protection - it's everyone's business".

Jane Carter answers some of our questions about how we can all work to keep children safe, and make their safety our business.

Q How can readers make child protection their business and what can they do to ensure that children are safe and feel safe?

A Protecting children is everyone's responsibility. The most important thing we can all do is actively listen to children and young people and help the child or young person develop their skills to manage unsafe situations. We can help them determine the nature and seriousness of the situation so that they can build their skills to respond in

future situations when adults may not be around.

Q What do you think is the biggest threat today to children's safety?

A Unfortunately emotional abuse and neglect are now the most commonly substantiated types of child abuse, followed by physical abuse. Sadly it is recognised that many children experience sexual abuse but that it is often undetected or not reported. Parents and communities are also concerned about 'online safety'

and this is an area where we need to be involved and be aware of what our children are doing online.

Q What are some ways for parents and guardians to ensure the safety of their children?

A This has been split this onto four main areas, these are simple things to consider but they are based on the idea of creating an environment where we actually listen to the voices of children and young people.

LISTEN to your children

- Know your children's daily activities and habits.
- Listen to what they like and what they don't like.
- Encourage open communication.
- Let your children know they can talk to you about any situation.
- Reassure your children that their safety is your 'number 1' concern.

TEACH your children

- Set boundaries about places they may go, people they may see, and things they may do.
- Reinforce the importance of staying with their friends when out and about.
- It's OK to say NO— tell your children to trust their instincts.

Get INVOLVED

- Know where your children are at all times.
- Your children should check in with you if there is a change in plans.
- There is no substitute for your attention and supervision.

PRACTICE safety skills with your child

- Rehearse safety skills so that they become second nature.



It could happen to any of us

Poverty and homelessness are two very distinct issues affecting many in our community. They are also inextricably linked as two cycles that are both hard to overcome and comprehend. But they are something that, in reality, with an unfortunate change of circumstances, could happen to any of us.

Churches of Christ in Queensland is committed to providing housing solutions for individuals and families facing housing stress and homelessness.

We house some of the most disadvantaged and vulnerable people in Queensland, with high levels of complex needs, and work in partnership with a number of specialist support services

which assists us to support people to sustain their tenancies and get them to where they want to be in life.

General Manager Housing Services Frances Paterson-Fleider expressed the importance of having a wide range of housing options to assist those experiencing hardship.

“We deliver a range of affordable housing options across the housing continuum from community housing programs through to affordable rental under the National Rental Affordability Scheme,” Frances said.

“There are many complex issues that can result in homelessness. These include domestic and family violence, financial crisis, long-term unemployment, economic and social exclusion, severe and persistent mental

illness and psychological distress, compounded by the chronic shortage of affordable and available rental housing.

“We believe in a housing-first approach. When a person has their basic needs met, particularly a safe home, and if they have access to opportunities, then they can reflect on other aspects of their life and reach self-fulfilment.

“Safe, appropriate and affordable housing is a basic human right, and fundamental to individual, family and community wellbeing.”

Housing Services takes a unique and holistic approach in the delivery of support and care for residents. As well as providing for people’s physical needs, we recognise it is equally important to provide for social, emotional,

psychological and spiritual needs.

Through Churches of Christ in Queensland’s self-funded community chaplaincy program, we provide additional wrap-around support services to build people’s resilience.

Our Housing Chaplains are committed to ensuring tenants have their basic needs met, with chaplains providing assistance to those who need support, referring them to food banks for fresh fruit, vegetables and household staples and connecting them with training and employment opportunities.

Housing Chaplain Team Leader Murray Thomson said there are many factors that lead to homelessness and poverty, and providing people with safe, secure and affordable housing is part of the solution to ending homelessness.

“All types of life experiences have lead these people to a situation where they feel powerless to change their circumstance and are reliant on welfare which, unfortunately, for a number of reasons, is set well below the poverty line,” Murray said.

“I believe that through the provision of safe and affordable housing, along with the community chaplaincy program, we are on the right track to giving people the time and space to address the issues that have caused their homelessness and consequent poverty.”

Murray also believes it is important to eliminate negative stigma surrounding people experiencing hardship.

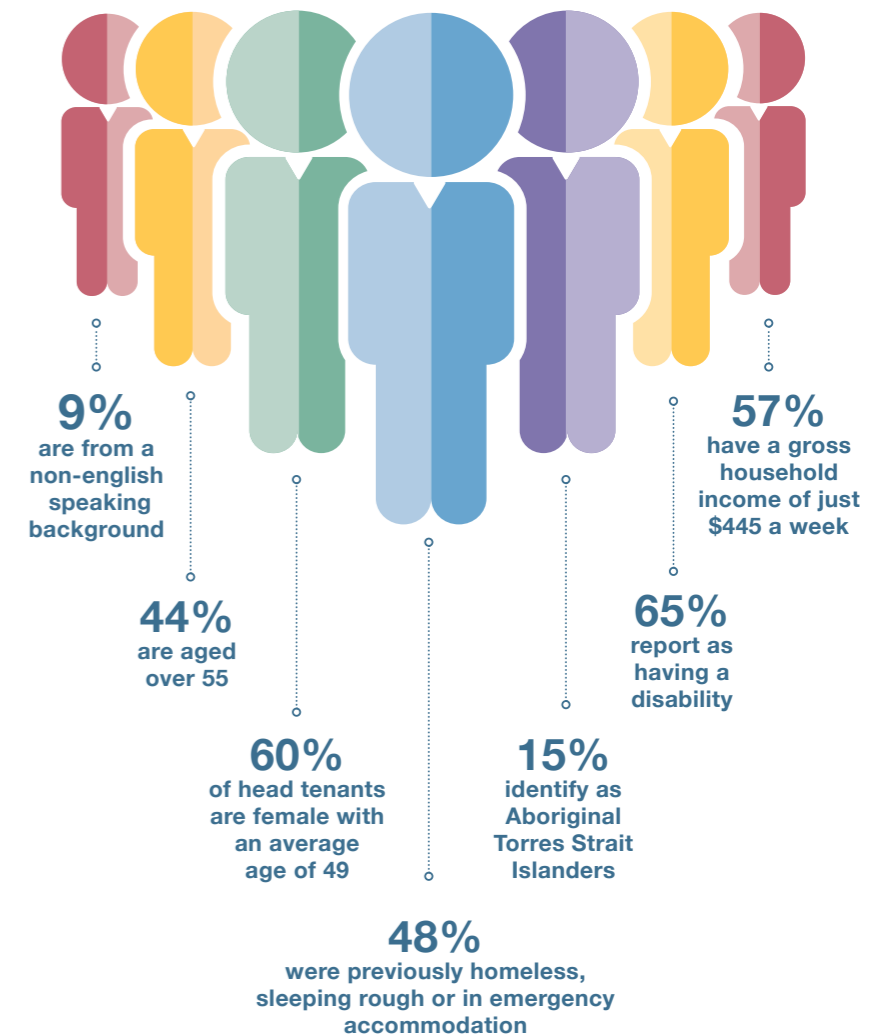
“It is not an easy life living in a society that relies on consumption to keep its economy alive with all the advertising and ‘must have’ things that this demands when you are constantly having to make decisions about paying a bill or putting food on the table. They are excluded from our mainstream society in many ways,” he said.

“They often live with stigma and discrimination, which traps them in this situation with few really effective programs to help them heal from the trauma or provide inclusive environments to give them a hand up and back into mainstream society.”

During Homelessness Week (7-13 August), Housing Services staff and volunteers participated in Homeless Connect events in Brisbane, Gold Coast and Sunshine Coast, where they were able to provide people with toiletries generously donated by Bunzl Australasia.

While there are many paths that

Profile of Housing Services residents in 2016



lead individuals and families to living in poverty, one clearly identified route to a life of homelessness and hardship is young people aged 15-25 who have grown up in the statutory care system.

The Youth CONNECT Social Benefit Bond takes steps to address this and help break the cycle of poverty and hardship for these incredibly vulnerable group of young people in our community.

“Within one year of exiting care, 35 per cent of these young people will be homeless, and more than 50 per cent will experience homelessness within five years,” Frances said.

“The program provides a housing-first approach to dealing with the complex needs these young people exiting statutory care and stepping into independence have. With safe and stable accommodation, they can then

concentrate on attaining education and work goals, building their resilience and opportunities for success in their future lives.”

Over 15-21 October we will be marking Anti-Poverty Week.

The week encourages Australians to organise or take part in an activity aiming to highlight or overcome issues of poverty and hardship here in Australia or overseas, and is an extension of the United Nations International Anti-Poverty Day on 17 October. ■

Poverty and severe hardship affect more than one million Australians and around the world more than one billion people are desperately poor. For more information, go to antipovertyweek.org.au and find out how you can take part.

Gladstone's Shed19 open for the community

With a generous grant of \$500,000 from the Gladstone Foundation, Gladstone Church of Christ was able to renovate and extend the office facility that is part of Shed19.

This building project began in January 2017, and was completed in time for a grand reopening on 27 August.

Shed 19 was established in August 2002 when Gladstone Church of Christ purchased an industrial shed in Toolooa, Gladstone. It provides a multi-purpose activity centre and place of meeting for the church and community groups, seeking to meet the needs of the vulnerable and disadvantaged people of Gladstone.

Gladstone Church of Christ Minister, Lyall Muller, said the church is “grateful for the provision of this incredible space



■ Top, Pastors Lyall Muller and Jackie Crighton inside the new office. Below, the new office building.



and are excited about the way this new office will facilitate providing support and assistance to the local community.”

“It is the desire of the church to see past hopelessness to solutions, empowering the disadvantaged to find solutions to meet their needs; to be a loving, caring, empowering presence of hope in the local community,” Lyall said.

In 2009 the church began a ministry called HopeLINK to provide support to those in the community who are hurting and in need, with the aim of helping them grow, heal and succeed in life. With the expansion of the HopeLINK ministry, the need for extra offices and appropriate training spaces became critical.

“The original office facility was comprised of two offices, a photocopy room, and a meeting room that was also the thoroughfare to all the other rooms. At times four staff or volunteers would be working around the kitchen table,”

The new building provides the space they need, including a large training room, a small meeting room, a proper entry, and six offices.

“It will provide for our present needs while allowing for growth in the future. The design allows for privacy for different support groups meeting at the same time, as well as confidential counselling spaces,” he said.

The Gladstone Foundation manages the voluntary contributions made by infrastructure project proponents in Gladstone. The aim of the Foundation is to help ensure there is sufficient social infrastructure to meet the needs of the region’s growing population and enhance the liveability of Gladstone communities.

We are very grateful to the Gladstone Foundation for providing the financial means of filling this need and for the many others who have contributed in significant ways.

“Of special note is the work of Stephen Strachan from Engineers Queensland who worked as Project Manager free of charge,” Lyall said.

“With the completion of this project, the Gladstone church looks forward to providing a safe, welcoming space where those struggling with life can find support, help and hope. It is the desire of the church to bring the light of Christ into the Gladstone community by offering Christ’s hope, expressing God’s love.” ■



A playground for all

The Lakes Church in Cairns has recently opened a new Nature Playground. Throughout 2016 they looked for ways to invest in families, and were excited to launch the new playground on Sunday 30 April this year.

The church enjoys engaging with over a hundred families as part of their playgroups during the week and up to a hundred kids over the weekend with kids clubs and church services.

Senior Pastor Geoff Snook said the playground will have many benefits.

“The Nature Playground will benefit all ages all throughout the week. It will be a safe place for kids to have fun and run around,” Geoff said. “It will be an investment in adults too, as more in-depth, God-led conversations can be had while the kids are enjoying the playground.”

“The playground will also be for those who are yet to come: kids who aren’t born yet, families that haven’t been met yet, people who God wants to reach.”

It was thanks to the generosity of the church community that the dream



for the playground was realised, with over \$50,000 raised and many hours committed to the project.

“A number of local businesses joined in with donations of material and professional labour. Church members Ray and Lucy Wearmouth volunteered as project managers and did an amazing job seeing the playground through from planning to fulfilment,” he said.

But it wasn’t just thanks to the support of the local church community that the playground came to be realised.

“Through God’s providence, a Canadian couple who regularly visit Cairns were incredibly generous in using their playground company, Earthscape, to design the playground specifically for us. This couple first came into contact with our church when we helped their son many years ago when he arrived in Cairns. Earthscape also provided two skilled workers who came from the Canadian snow to Cairns humidity to help us with the technical parts of the construction. ■

“
It is the hope and prayer of The Lakes Church that this playground will be used by God to bring joy and fruit for his kingdom now and in the years to come.

Senior Pastor Geoff Snook



Our first churches

- 1882 Zillmere
- 1882 Toowoomba
- 1883 Ann Street Brisbane
- 1883 Warwick
- 1884 Mt Walker
- 1885 Marburg
- 1885 Ma Ma Creek
- 1886 Gympie
- 1888 Roma
- 1889 Bundamba
- 1891 Rosevale
- 1892 Maryborough
- 1894 Boonah

Zillmere celebrates 135 years

On Sunday 10 September, Zillmere Church of Christ celebrated its 135th Anniversary.

The church is renowned as the first Church of Christ established in Queensland, and is also recognised for its steadfast promotion of the gospel.

It was on 23 August, 1882 when the Zillmere church held its first meeting. Between 1 August and this first gathering, 16 people were baptised at the Zillmere Waterholes. Stephen Cheek and FW Troy had been on a mission to the northern Brisbane suburb during this time when the young church resolved to spread the gospel from its giving.

The church and its community were excited to recognise and celebrate this special milestone and to commemorate the witness that the church has faithfully maintained in the community over the years.

The guest speaker for the celebrations was evangelist Mr Jim Newman who serves as the director of the Southern Cross Bible Institute in Toowoomba. Previously, Jim served as a missionary and church planter in Grenada, West Indies for 12 years, and is a gifted speaker who

brought a powerful message on the day.

Members of Conference and Council, other south east Queensland churches and members of the community were invited to help the church celebrate the wonderful milestone and the beginning of our churches in Queensland.

One of their dedicated church members had been busy making new curtains, cushion covers and has also visited the Historical Resource Centre in Mitchelton to obtain several historical photos, which she framed and hung in the foyer of the chapel.

The Tongan Fellowship, who access the church's building for their meetings, joined the church on the day, blessing those attending with the magnificent voices of their Choir. Other items on the day were presented by the church's young people, who form part of the church's Children's Band.

After the morning breaking of bread meeting, those in attendance came together to enjoy a fellowship lunch.

A 135th Anniversary cake was cut by the longest active member of the church, Mrs Gwen Nielson. ■

Read more about the history of the start of our first churches on page 32.

Kenmore Campus ready for the future



As the final fitout of the café, auditorium and function room takes place, the site surrounding the new buildings at Kenmore will soon be transformed through extensive landscaping, completing the vision for our Churches of Christ Campus at Kenmore.

In August 2014, the first sod was turned on the site that had been our home for more than 50 years, setting up the transformation to take it to the future, and making it home for the next 50 years and beyond.

With the Head Office building and multi-level carpark completed in December 2016, the second stage function centre at the front of the site will be completed in time to host our 134th Annual General Meeting and annual Ministers Forum.

Development Manager Barry Innes is excited to see the final touches placed on the transformation of the site.

“As the landscaping progresses, we look forward to having iconic flame trees featured in tree plantings, along with canopy and ground cover species designed to provide food and



It's our strong commitment that the Kenmore Campus facility represents the Mission and Values of our organisation as together we seek to bring the light of Christ into our communities.

Steve Webster

habitat for native animals. When complete, the visual amenity of the site, its street appeal, will be far more pleasing,” Barry said.

“Once mature, the landscaping will allow the buildings on the hillside site to ‘settle in’ and fit with the local green environment of Kenmore.”

To contribute to social and community transformation, a Mission Coordinator for the campus has been appointed. Steve Webster, pictured, will work to make our Kenmore site into a truly integrated community.

Steve will be available for pastoral support and to explore the creation of

a new faith community and enterprise functions for the campus including the café and function spaces. He will also seek opportunities within our local Kenmore community to extend our mission.

“I’m very excited to take on this role and the opportunities ahead to serve our local community through this fantastic multi-purpose facility,” Steve said. “It’s our strong commitment that the Kenmore Campus facility represents the Mission and Values of our organisation as together we seek to bring the light of Christ into our communities. ▶



Developing the future

From previous page.

Across Queensland, a number of major capital developments are taking shape and cementing our future in the communities we serve. They provide state-of-the-art facilities and integrated community models to provide the best possible support and outcomes. We are in the midst of an exciting phase, with developments at Stanthorpe and Kallangur to be completed before the end of the year, and others at start-up stage.

STANTHORPE

Expected to be completed in November, the expansion to our current Villa Carramar Aged Care Service will accommodate over 100 people in a home-like cottage environment. We are hoping to start welcoming new residents prior to Christmas.

WARWICK

We are excited that construction is underway on our new campus Community Centre and 128-bed aged care service, which will form part of the new Warwick campus. It is expected to be completed in mid-2018. Regency Park Retirement Village, the first service to be co-located on the new Warwick Campus is also expanding with the new resident Club House on schedule to be completed by November. Residents are looking forward to holding their Christmas celebrations in their new clubhouse.

BOONAH

The development application for the extension of our existing Fassifern Aged Care Service and Retirement Village is with council and we are awaiting approval. The development application includes a new 96 aged care service to replace the existing nursing home, a community centre for all residents to use and new independent living units for our retirement village. Beautiful landscaped gardens are planned to complement the Fassifern region and there will be increased social spaces for all to enjoy overlooking a lake.



■ Above, Wattle Apartments were officially opened on 12 July. Left to right: Gary Edwards, Peter Russo MP, Hon. Mick de Brenni, Frances Paterson-Fleider and David Swain. Below, construction at the new Stanthorpe aged care service.

MERIDAN

We have broken ground at our Sunshine Coast community hub and seniors living campus in Meridan. We are in the process of requesting approval from council to allow our community hub and activities to be open to the local community. This will allow the community to use the café, community centre and swimming pool facilities. Construction is due to be completed in late-2018.

KALLANGUR

The 50 townhouse affordable living development is almost complete, with the first residents expected to move in before the end of the year. The Duffield Road development has been named “Kalangoor” after the Aboriginal name for the area, meaning ‘a good place’. This housing development is the first to be realised without the involvement of the Queensland Government thanks to the generous donation of land by philanthropists and Rivers Church of Christ members, Ian and Neva Hardy.

WATTLE APARTMENTS

On Wednesday 12 July the Hon. Mick de Brenni, Minister of Housing and Public Works, officially opened our new over-55s housing development, Wattle Apartments. The development is part of our Acacia Ridge Campus, alongside Brig-O-Doon aged care service and retirement village. Wattle is fully occupied with residents enjoying their new home. ■

Hope for future managers

A new initiative is better equipping our staff for the future. The Management Development Initiative gives identified potential leaders in our residential aged care services the skills they need to be well-equipped leaders of tomorrow.

Director of Seniors and Supported Living Bryan Mason has implemented a program to upskill and retain valued staff members.

“We have highly skilled and valuable individuals in our services who have the potential to be great leaders,” Bryan said.

“This pilot program is laying the foundations for the next decade of leadership.”

After discussions with the Learning and Development team, the Management Development Initiative was implemented. Over a 12-month



■ Above, Tracey Hurst (right) is the mentor to Lisa Jackson and below, The Management Development Initiative cohort, including their trainers and mentors at the first day of the pilot program and below,



period, a group of selected individuals will meet to learn about key aspects of the business from a management perspective.

Participants will also have access to a mentor, who they will be able to touch base with for advice and guidance.

In May the initiative was launched, with participants, mentors and facilitators gathering for the first session and lunch event.

“Managers need support and they need to be able to learn from mentors and their colleagues. This program will set them up for the future,” Bryan said.

“These participants have a cohort of colleagues they can connect with and support each other in their work. Through this, they can see that they are not alone, they are not isolated.”

With participants from as far west as St George, as well as from Melbourne, there are great geographical distances between some services, which this program attempts to break down and bring people together.

Sharon Scotney, a registered nurse from Amaroo Aged Care Service in Gatton, was identified by her service manager as a potential future leader and was asked to participate in the pilot program, and she is looking forward to what she can learn.

“I was encouraged to apply [to be part of the program] and I am looking forward to learning how to communicate more effectively,” Sharon said.

Service Manager Kane Singh, from Clive Burdeu Aged Care Service is also taking part in the program and is looking forward to the real-world examples that will be used in the course.

“It will be really valuable to be learning about real examples of finance scenarios, human resources and more,” Kane said.

The 12-month program will cover topics including compassionate communication, cultural awareness, mental health first aid, finance, human resources and leadership. It is designed to create well-rounded and competent managers.

“Good managers are good at what they do, but it is also about the type of person they are. Managers of integrity are not only technically good, but they are good people who are playing a part in something that is bigger than oneself. This initiative is about developing managers of integrity,” Bryan said. ■

Celebrating the first Australians



■ Songwoman Maroochy, Songwoman and Law-woman of the Turrbal People offering Welcome To Country at Centrifuge

Bonjour, Hola, Konichiwa, Namaste, Sawadee Krup, Goo-roo-mba big-ee, Gar-bar Yah-dah, Nah-ra, Won-yah noolum. That's 'greetings', in nine of the world's languages, including three of the 150 or so living Indigenous languages in Australia.

Chief Operating Officer David Swain spoke at NAIDOC Week morning tea held at Kenmore Head Office on Friday 7 July. The following is taken from his address.

NAIDOC week is a time to celebrate Aboriginal and Torres Strait Islander history, culture and achievements and an opportunity to recognise the contributions that Indigenous Australians make to our country and our society.

From the end of May and into July, each year as a nation we journey through a time of mourning and solemn reflection to a focus on reconciliation and NAIDOC week – a time of celebration.

On 26 May we marked National Sorry Day: a day to recognise and respond to the mistreatment of the country's indigenous population, especially those who were part of or impacted by the stolen generation.

From the late 1800s to the 1970s many Aboriginal people and some Torres Strait Islanders were forcibly removed from their families as children by past Australian Federal, State and Territory government agencies and church missions. The children removed were sent either to institutions or adopted by non-Indigenous families. Nearly every Aboriginal family and community was affected by these policies of forcible removal – the tens of thousands of children removed where often denied their families, their language, their culture, and their heritage. Those taken suffered many forms of abuse.

"Collectively, we refer to these peoples as the 'Stolen Generations'. The injustices inflicted on them continue to have profound impact on individuals, families and communities today," David said.

"While you or I likely didn't draft the government policy, didn't participate in the removal, didn't keep anyone from connecting with their family, and didn't intentionally inflict further abuse on anyone that was removed, there is plenty to be sorry for.

"I personally am sorry for the unjust policies of the past and the present. I'm sorry for what has happened to individuals, families and communities. I'm sorry for the times that I haven't stood up for Aboriginal or Torres Strait Islander Australians when I could have and should have."

Achievements are exemplified by the following recipients of Australian of the Year.

- 2014 Adam Goodes (AFL player)
- 2009 Mick Dodson (Professor of law)
- 1998 Cathy Freeman (athlete)
- 1992 Mandawuy Yunupingu (Musician)
- 1984 Lowitja O'Donoghue (nurse and ATSIC chairperson)
- 1979 Neville Bonner (parliamentarian and Elder of the Jagera people)
- 1978 Galarrwuy Yunupingu (Yolngu leader)
- 1971 Evonne Goolagong Cawley (tennis player)
- 1968 Lionel Rose (boxer)

"NAIDOC week is very much about recognising the achievements of Aboriginal and Torres Strait Islander Australians, and also to celebrate the rich heritage of their cultures and of our cultures. It celebrates peoples that have managed this land for the past 50,000 years who contribute rich understandings of family and community and teach us the importance of people before position."

National Sorry Day then moves us into National Reconciliation Week (27 May to 3 June), a time of promoting unity and respect between Aboriginal and Torres Strait Islanders and non-Indigenous Australians. It is about respect for Aboriginal and Torres Strait Islander heritage and valuing justice and equity for all Australians.

"This year we particularly commemorated two landmark decisions that went a long way towards promoting reconciliation at a national level: the 50th anniversary of the 1967 referendum which led to constitutional change, including counting our First Australians in our national census.

"We also commemorated the 25th anniversary of the Mabo decision, a decision that recognised the rights of Aboriginal and Torres Strait Islander peoples as the traditional owners of their land, demolishing the notion of Terra Nullius.

"Within our organisation we are putting the finishing touches on our second Reconciliation Action Plan, a roadmap for practical reconciliation built on the pillars of promoting relationships, respect and opportunities. The Plan is due to be launched in October."

NAIDOC week is very much about celebrating Aboriginal and Torres Strait Islander history, culture and achievements.

"This year, NAIDOC week falls one week before the final game of the State of Origin.

"Could you find a better player than Johnathan Thurston? Of course, Arty Beetson was pretty good. On the Queensland side this season we've got other great players like Greg Inglis, Sam Thaiday, Dane Gagai and Will Chambers. Under the leadership of Laurie Daley, New South Wales have great players too, for example Nathan Peats, Andrew Fifita, Wade Graham, Jack Bird and Blake Ferguson.

The people mentioned above are great role models and also happen to be indigenous Australians. As the players and the list of Australian of the Year recipients on this page attest to, Aboriginal and Torres Strait Islander Australians punch above their weight as far as achievements, often against extraordinary odds, as previously highlighted. ■

Young, vulnerable & marginalised

We have a long history of caring for some of society's most vulnerable and marginalised people, seeking out individuals and communities who need care and assistance.

Through a new program, we will be supporting some of Queensland's most vulnerable and marginalised young people, and helping them transition to adulthood and independence.

Churches of Christ in Queensland will deliver one of the Queensland Treasury's pilot Social Benefit Bond programs, which will tackle youth homelessness.

Chief Executive Officer Dr Paul Scully said the bond will allow us to give vulnerable young people the support they need now more than ever.

"Our Youth CONNECT Social Benefit Bond will improve the life chances of young people transitioning from state care into adulthood and independence," Paul said.

Research shows that for young people transitioning from a childhood in state care to adulthood, they are extremely vulnerable to experiencing homelessness, poor education, unemployment, mental illness, imprisonment and substance abuse.

"While this research paints a grim picture, it also shows that there are significant opportunities to intervene early and turn the course of their lives around."

In 2015-16 over 43,000 young people were alone and in housing crisis when they approached a specialist homelessness agency; over half of these were already homeless.

"Youth CONNECT will offer wrap-around services aiming to build young people's resilience factors of education, employment and community connection and to influence their future trajectory towards achieving sustained housing," Paul said.

"By taking a holistic, integrated approach to helping youth support themselves, the Youth CONNECT team will work individually with young people from the statutory care system at high risk of homelessness to build the key capabilities they need to both survive and thrive in the longer term.

"This approach supports the development of better coping skills to improve life outcomes and sustain long-term health and wellbeing into adulthood, ultimately reducing the risk of future homelessness.

"We expect to have a significant impact on improving the personal resilience of young people participating in the program."

Expected outcomes for young people in the program include sustaining stable accommodation, engaging in education, engaging in employment and on way to financial stability, and developing skills they need to thrive personally and in their communities.

Over six years, 300 young people aged 15-25 from across Queensland will participate in the program. They will be divided into four cohort groups, with their resilience measured and verified as they complete the program.

"The first step to building resilience is ensuring that these young people have access to safe, stable, affordable and



appropriate accommodation. The 'housing first' approach recognises that by having access to secure housing these young people can concentrate on something other than where they are going to sleep that night. From there, the focus can move to helping them to develop their own safety net and community, and to building the skills necessary to operate, and ultimately succeed, in the world."

The program takes advantage of our extensive experience providing housing and care to young people.

"Youth CONNECT leverages this expertise and experience that we have built with this group of vulnerable young people, and applies it to the next phase of their lives, namely their transition to independence." ■



What is a Social Benefit Bond?

In recognition of the need to try a different approach to tackling challenging social issues facing the Queensland community, the government has piloted three Social Benefit Bonds.

In essence, the Social Benefit Bond is an outcomes-based arrangement involving government, private investors and a service provider. In simple terms, investors provide the initial capital to deliver the service, which the government then pays the investors when the agreed social outcome has been achieved.

It is anticipated that by addressing the social issue - in this case homelessness - there will be savings on expenditure for acute and crisis services in the future, which is used to pay the principal and provided as a dividend to investors.

Why the Youth CONNECT Social Benefit Bond is important

Research suggests that young people leaving state care can experience the following:

- 35% will be homeless within one year, and more than 50% will have experienced homelessness within five years
- 29% will be unemployed
- 47% will have some involvement with the criminal justice system
- 53% will only complete Year 10 or below, while only 35% will complete Year 12
- 22% will have unacceptably low literacy and numeracy levels
- 53% will experience substance abuse
- 53% will experience clinically significant emotional and behaviour difficulties
- Approximately 30% will be pregnant or parents themselves when they leave care, with 54% of their children removed from them and placed on care and protection orders, thereby perpetuating the intergenerational experience of children in care.

To expect these young people to have the instantaneous capacity to live successfully when they leave care is unrealistic, yet there has been almost no investment of focus on helping them through this transition.



What it's like in their world

Carers, families and loved ones of people living with dementia, face guilt, sadness and hopelessness as watch their family member or friend navigate their world with the condition.

A new product, launched by Churches of Christ Care in June, enables participants to experience the physical and mental challenges faced by people living with dementia.

We secured the Australian mainland rights to the Virtual Dementia Tour®, which uses patented sensory tools and instruction, based on research conducted by P.K. Beville, M.S., a specialist in geriatrics.

Millions of participants have experienced the Virtual Dementia Tour, which has been successfully deployed in 20 countries.

United States based P.K. said the tour is a scientifically proven method designed to increase sensitivity toward those with dementia.

“The tour enables caregivers to experience for themselves the physical and mental challenges those with dementia face, and use the experience to provide better person-centred care,” P.K. said.

“During a Virtual Dementia Tour experience, participants meet with certified trainers who outfit them with patented components that alter their senses, and guide them through the tour.

“Tasks and exercises that are part of the tour enable carers and professionals to experience for themselves the physical and mental challenges facing those with dementia.”

According to Alzheimer’s Australia there are more than 413,106 Australians living with dementia, with approximately 244 new cases each day.

It was this growing need for appropriate dementia care and knowledge that led us to secure the exclusive mainland Australian rights to the immersive experience.

Director of Churches of Christ Care Seniors and Supported Living Bryan Mason said that securing the rights was a significant step for the organisation and the aged care sector.

“Being able to have carers and health professionals interact with their environment with a short-term dementia filter will go a long way to them better understanding what it is like to

experience dementia,” Bryan said.

“Without actually having dementia there isn’t really any other way besides the Virtual Dementia Tour to feel what a loved one or client experiences.”

In late June, P.K. joined us in Australia to help launch the product and train our staff to become certified in providing the tour.

Bryan experienced the tour first-hand and said it was eye-opening.

“Having worked with clients with dementia and being in the aged care sector for many years, I thought I knew how those living with dementia felt, but I was shocked and amazed by the

experience,” he said.

“It puts you in a place where you don’t know what is up, what that strange noise was, or even who that person is in front of you.

“Sadly that is how those living with dementia travel through life, but the tour allows us to deliver on our positive wellbeing model of care by placing ourselves in the shoes of another, so we can meaningfully connect with those who experience dementia in order to make a positive difference in their lives.”

Evan Ferguson is a facilitator who will be delivering the innovative tour, and he said that the tour aims to give a person a snapshot of the difficulties someone living with dementia faces, and thus reduce the stigma surrounding dementia in the community.

“The tour is a great opportunity for anyone to walk in the shoes of a person living with dementia and experience a small taste of what living with dementia can be like. Once we can understand what it may be like we can better relate to the needs of those who are living with it daily,” Evan said. ■

The Virtual Dementia tour is a fully mobile experience that can be set up by certified trainers in a short amount of time in most locations.

Information on the Virtual Dementia Tour provided by Churches of Christ Care can be found at cofc.com.au/vdt. Carers and providers can also register their interest in participating in a Virtual Dementia Tour on the website or alternatively email vdt@cofcqld.com.au.

September is Dementia Awareness Month

Dementia is not just a disease, but a descriptor for various disorders affecting the brain, thinking, behaviour and fine motor skills. It is most commonly seen in the elderly, but also presents in young people. Not yet curable, it is the second leading cause of death for people aged 84-95 years.

The stats:

- 1 in 3 people over 85 are living with dementia
 - 1 in 10 people over 65 are living with dementia
 - Dementia in our aging population will continue to increase
 - There are 240 new cases of dementia diagnosed every day
 - 14.7% of Queensland’s population is aged over 65
- We are committed to the care and, more importantly, the wellbeing of people living with dementia. Other innovative programs we have initiated include the Active Volunteers in Dementia pilot research program and the award winning Dementia Church Service, each providing for the increased wellbeing of people living with dementia.



Pantry Assist Annerley Church of Christ

When hard times are upon us, it is comforting to know that there is somewhere to go that will provide support with basic necessities, and a sense of hope for the future.

For the past four years, Lyn has volunteered as the coordinator of Pantry Assist, a service run out of the hall at Annerley Church of Christ.

“Through Pantry Assist, we regularly support up to 100 families each week, providing access to fresh food and groceries for free or affordable prices for people experiencing extreme circumstances,” Lyn said.

Lyn ensures that goods are collected and ready for the Pantry to be open every Tuesday, as well as looking after the volunteers who support the program.

“On Pantry day, 16 to 18 volunteers are needed for it all to run smoothly. We also engage volunteers on Mondays and Fridays to collect goods and to assist with the loading and unloading of the truck.

“The Pantry might open on a Tuesday but it is a full schedule all week to ensure Tuesday happens as efficiently as possible. Monday, Wednesday and Friday are Foodbank collection days, along with shelf restocking and receiving collections.”

On Pantry day, volunteers prepare donated bread, fruit and vegetables and set up morning tea for the customers; doors open at 10am and close at midday.

“Once the last customer has left, it’s time to pack everything away and clean up.”

Goods and food are donated by individuals and organisations such as Ozharvest, SecondBite, Woolworths, Bakers Delight and on occasion, The Cheesecake Shop. Pantry Assist purchases stock from various other food and household good distributors including Aldi, Bunnings and Officeworks.

“The prices of food and household goods vary from 50 cents to \$2.50 each. All fruit, vegetables, fresh milk and baked goods are free. The average spend for each customer is \$8 - \$10 providing a trolley full of food with a retail value of over \$60,” she said.

Pantry Assist customers come from all backgrounds. Customers are asked for a Centrelink pension or health care card, immigration card, student card or passport to register, but nobody is turned away.

“After their third week of using the service, they are issued with a permanent Pantry Assist card and an ID number. This is done over three visits to see if they are going to use the service on a regular basis.”

Lyn was a volunteer for two years before taking up the role of coordinator, and was a casual user of the service in the two years before that and has seen many changes over the years. ■

Pantry Assist welcomes donations of food, household items ranging from brooms to washing powder and larger items such as new chairs, esky’s, fridges and freezers. If you can help either through volunteering or with donations of goods, please contact Lyn on 0431 895 842.



CYCLE

Practical
hope
for young
people

For young people living in out-of-home care, they face enormous disadvantage compared to the rest of the population, not least when it comes to the education outcomes.

The Child, Youth Centre for Learning and Employment (CYCLE program) is an innovative program that we established in 2015 to re-engage young people in their education. The overall goal of the program is to help young people improve their family member or friend literacy and numeracy skills, complete their senior schooling and any other certificate, vocational or tertiary qualifications they need to achieve their goals and establish themselves with a strong footing for the future.

NEW HOPE FOR A FUTURE

John is 15 years old and has experienced significant trauma throughout his short life. Due to issues of drug misuse and domestic and family violence, he has been separated from his mother and his siblings. He is just like many children and young people living in out-of-home care.

With an interrupted schooling experience due to behaviours as a result of his traumatic childhood, he attended multiple schools before being excluded,

Invest with us ~ invest in them

This vital program receives no external or government funding. We need your support to expand our service and give hope for the future to the most vulnerable of young people. Please invest with us to give practical hope to these young people.

How can you get involved?

Become a regular or once-off donor: CYCLE is solely funded by Churches of Christ in Queensland and we need donors to help us expand the program and continue to develop and improve the model. Email fundraising@cofcqld.com.au or phone 1800 600 900 to invest in this program.

Become a volunteer

Could you teach a practical skill or offer your time to walk alongside young people as they learn? Contact volunteers@cofcqld.com.au or phone 1300 760 622.

last attending school in Year 8.

John is taking part in the CYCLE program and since, commencing, he has not missed a day. He is now completing his schooling through distance education, and despite enrolling in his first term late, he successfully passed.

John has repeatedly expressed his

wishes to complete Year 9 and 10 through the CYCLE program, and wants to begin an apprenticeship while studying Year 10, so that he can complete his senior schooling and then transition on to full-time employment.

THE CYCLE PROGRAM

Our Children, Youth and Families team realised that young people in out-of-home care for any length of time are vulnerable to becoming disengaged with their education or achieving diminishing results, and have a distinct lack of support around them to turn things around.

For young people living in out-of-home care, only 53 per cent will complete Year 10 or below, and only 35 per cent will complete Year 12.

Each young person in CYCLE receives an individual plan and the tailored support they need to achieve their educational goals, such as John above.

There are hopes to expand the service to other areas of the state and assist more young people to achieve their goals. It is also hoped that CYCLE will implement its own curriculum, in-line with the national curriculum. ■

Hope for the hurting

Do you have a personal mission statement? Jesus' mission was: "...to comfort the broken-hearted, to proclaim release for captives and freedom for prisoners..." (Isaiah 61:1-7). He said, "I have come that they may have life, and have it to the full" (John 10:10): that is, to bring hope. This is our mission: our reason for working with children and aged people, for providing homes, building communities, reaching out in compassion. Our Kingdom Access Places and churches exist to generate hope. Yet how easy it can be to not see the struggles of those around us.



Recently a young woman, 'Kylie', came to see me. She felt useless, afraid and solely to blame for her failed marriage.

The media reports on domestic violence had challenged her. She began to question her husband Brian's behaviour: whether his put-downs, abuse and manipulation of her and their children was, in fact, domestic violence. When she sought advice, a church leader asserted that no circumstances justified divorce: God's will and teachings require a wife to submit to her husband until death.

Kylie was stuck: stay, obey God but risk her own welfare and that of her children or break her marriage vows, disobey God and leave.

Perpetrators often assert that submission to husbands is mandated by God. They conveniently ignore instructions like Ephesians 5:25 which tells a husband to love his wife, even giving his life for her if necessary.

In a first century patriarchal society where women were disposable property, Jesus' teachings about women were radical, empowering them with dignity and equality. Studying these passages with fresh eyes, Kylie realised that, through his abuse, Brian had continually broken his marriage vows. Hard to accept, but it gave her a freedom and hope that she hadn't felt in the seven years of her marriage.

Kylie wanted to present Brian an ultimatum: undertake a behaviour change program or she would leave. Discussing this with her church leaders, they now offered to visit and counsel them together - to help save their marriage.

Kylie's bravery in seeking church counsel could have led to more severe destructive behaviour rather than moving towards a marriage where each person loved their partner as themselves.

The next morning, Kylie emailed me: the elders had changed their minds. "We've talked and prayed and we're starting to understand. We want to empower you. Go ahead and talk to Brian. We will support each of you through this."

Her talk with Brian went as well as she could have hoped. Kylie had prepared the way thoroughly, giving him every opportunity to change. Brian finally took Kylie's pleas seriously. He agreed to attend a behaviour change program and moved out of the family home, allowing school, home and social activities to continue for the children without disruption.

Kylie is now more relaxed, enjoying

a sense of security that she hasn't experienced in years. Brian will continue with structured contact throughout his behaviour change program, with the mutual hope that they may eventually rebuild a loving and respectful relationship. The elders' wisdom and support for both Kylie and Brian whilst condemning Brian's behaviour had empowered Kylie and renewed hope for them both. Both remain connected to their church, supported by Christian friends and mentors who keep them focused on a better future.

Hope for the future? This is what we, the people of God, are about.

We are not true to our God-given mission when we do not see injustice right in front of us, or if we see suffering and justify it as God's will. Historically, domestic violence has been difficult to understand. It was easier not to notice or to regard it as none of our business.

Yet wherever there is oppression it is our duty to work for liberation: to model healthy, mutually loving relationships; to be alert to signs that things are not okay; to offer support and protection for all people while condemning all abusive behaviour. We cannot afford to believe that this doesn't happen on our patch. Statistics show that domestic violence impacts our workmates, our church mates, our friends and sometimes even our family. We must act to prevent another generation from repeating a destructive pattern and to build a future filled with hope, not fear.

MAKING A SAFER WORKPLACE

Recently, staff in our services and at head office were encouraged to take part in an internal survey to understand what domestic and family violence means to them.

The survey was led by the Domestic and Family Violence Taskforce, which is seeking to understand people's awareness of violence, and will create tools and information for staff and managers to make sure our workplaces are safe places to come forward about violence and abuse.

This year, we will be marking White Ribbon Day on 25 November, to raise awareness and help stop domestic and family violence in our community. ■

The DV Connect (1800 811 811) service is available to assist if you or someone you know is experiencing domestic and family violence.



■ What role do artefacts, such as photos, have in making the transition to aged care easier?
Tricia King is completing research to uncover their role.

Research paves way for better care

Research is fundamental to acquiring knowledge, which can be applied in new and innovative ways for the benefit of service delivery, staff and volunteers, and in improving outcomes for our clients.

Through participating in research projects, either led by Churches of Christ Care staff, university students, or in partnership with other organisations, we can contribute to finding out ways to make the future better and brighter.

Two research projects currently taking place in our aged care services are examining very different elements of how life can be made better for people living in aged care, as well as staff and families.

For many, it is a difficult transition into aged care. They leave behind their homes and what is familiar. Many new residents bring with them artefacts and photos to decorate their room. Tricia King is a PhD candidate from Queensland University of Technology who is currently conducting a research project at a number of Churches of Christ Care aged care services. As part of her research, Tricia is examining how these artefacts help resident's wellbeing through the transition.

"Photographs, in their most elementary form, are reflections of the past that are positioned for the future," Tricia said. "Surrounding oneself with images invokes meditative recall that invites retrospection of lived experiences...as we move through different phases of our lives we read the

images under changing circumstances."

Tricia embedded herself in aged care services to examine how displayed photographs could assist in the wellbeing of residents during the transition from home to aged care.

The project builds on previous research, which revealed the relationship residents had with photographs and other artefacts in their rooms, which they used as a way to connect and share their stories.

Another research project currently underway at two aged care services in Toowoomba is exploring hearing loss in people living with dementia.

Anthea Bott from The University of Queensland, is looking at the prevalence of hearing impairment in people living in aged care with dementia.

It can be difficult to accurately test the hearing levels of people living with dementia due to communication challenges. This research will test two different techniques for measuring hearing, as well as assessing the communication needs of people living with dementia in aged care who have hearing loss. Through understanding these needs, it is hoped staff in our aged care services, will be better able to communicate with residents, which will in-turn, improve their wellbeing.

A research project is currently being planned to rigorously evaluate the impact of the innovative Virtual Dementia Tour which is being rolled-out across our services. ■



Stay humble, stay connected, stay hopeful and stay joyful so that we can each live out simple wisdom for a complex future.

Annual Centrifuge conference round up

In today's world, where our 'news feeds' are bombarded with atrocities and things happening around the world, where we are forced to be 'on' and 'active', where 'paleo' and 'clean-eating' are the new rules and everything is 'shared, liked, retweeted, snapped' and emoticons have their own language ... sometimes we just need to take a step back and stop.

Centred on the theme 'STAY', the annual Centrifuge event explored the need for each of us to stay humble, stay connected, stay hopeful and stay joyful so that we can each live out simple wisdom for a complex future.

Rev. Tim Costello, the Chief Advocate World Vision Australia and a Baptist Minister, was the key note speaker, delivering thoughtful and enriching anecdotes from his time working with

and advocating for the world's poorest and his relationship with God. Tim has authored a number of books, including His books include Faith (2016), Hope (2012), Another Way to Love (co-edited with Rod Yule); Streets of Hope: Finding God in St Kilda; Tips from a Travelling Soul Searcher; and Wanna Bet? Winners and Losers in Gambling's Luck Myth (co-written with Royce Millar).

There was also a series of TED style talks and elective sessions, which focused on simple and practical ways to respond to the disruptive and complex challenges that impact our lives, our churches and our communities, including how to stay true.

YouTube sensation Josh Hawkins presented the perspective of a younger generation engrossed in social media and Instagram celebrities,

and understanding God's love and acceptance of us, just the way we are.

In the break-out sessions, attendees were able to learn from their peers about how to overcome, deal with and understand everyday issues, including making peace with an imperfect family; coping with a health crisis; navigating a faith crisis; surviving a difficult workplace; escaping the noise; and distilling the truth from 'alternative facts'.

As always there was ample time for input, discussion, catching up, networking, reflection and contemplating what God is doing in and through Churches of Christ.

Attendees found inspiration and encouragement and learnt how to care for themselves and each other as we press on in 'bringing the light of Christ into our communities'. ■



■ Zillmere Social Service Picnic 1910

After the Beginnings

With our Zillmere Church of Christ celebrating its 135th anniversary, we take a look back at the start of our Churches in Queensland and a look at this history of our first church. To read the full story in *The Church from the Paddock*, go to cofc.com.au/publications or pick up hard copy today.

By the year 1903 there were 29 local churches. The furthest north of these churches was Charters Towers, and the furthest west was Roma, and there were only two local churches, Ann Street and Zillmere. The Jubilee History of the Churches of Christ (1903) starts that these 29 churches had a total membership of 850. On 30 June 1904, the population of Queensland was 519,948, and the total church membership had grown to 900, representing a 0.002 per cent of the state's population. At the time of writing of this chapter, the population of Queensland, as recorded by the 'live' counter on the Queensland Government web page, was 4,612,962, and the Churches of Christ in Queensland Annual Report 2012 recorded a total

attendance of 6,811 in our churches, not including those associated with our care services. This indicates that those who regularly attend a local Church of Christ still collectively make up only 0.002 per cent of the state's population. This is a sobering statistic as we begin a chapter on the first steps for Churches of Christ in Queensland, post the flurry of planting that occurred around the time of Stephen Cheek.

Of the 29 local Churches of Christ recorded in 1903, 13 still meet for worship as Churches of Christ. This chapter is a brief history of the beginnings of these 13 churches.

As you read the following brief history summaries, you will find among these churches: a passion for the simple church of New Testament Christianity; a strong commitment to evangelism;

a ready willingness to plant churches where people lived; volunteer led churches supported by visiting (or employed) evangelist leaders; the use of homes for early church meetings; sacrificial giving and living to support the establishing of churches; and where sin and division comes into a local church, that local church loses it way.

ZILLMERE, 1882

The Zillmere church held its first meeting on 23 August 1882. In the three weeks between 1 August (when Stephen Cheek arrived in Brisbane) and 23 August, some 16 people were baptised at Zillmere Waterholes. In those three weeks, Cheek, with the assistance of FW Troy, conducted a mission there. What this mission consisted of – night meetings, visitation

or something else? – we are not told. But what we are told (Jubilee History, 1903) is that this young church resolved to aid the spread of the gospel from its giving. On 6 June 1883, "It was decided to give the two largest out of every five collections to help the work elsewhere, and this was the practice for many years." Special meetings for the proclamation of the gospel and the associated plea for simple New Testament Christianity were held by occasional visiting evangelists.

In 1903, of the 84 who had held membership in this church, 63 were people who had been baptised in this church.

Most of these were young people. In 1894, the first building for the church was planned, and this building was opened on 24 May of that year.

But for this history of Zillmere to be complete, it is fascinating for us today to visit a Baptist historian's view of the story of Zillmere.

In response, we should say that Stephen Cheek went to the church by invitation. If a majority of people decided to leave the Baptist church, that was simply their choice. The local people made a decision. To use a modern phrase 'church hopping' is not just a modern phenomenon. Baptist, Churches of Christ, and Assemblies of God (to name just three) have all experienced this movement of people from a local church to another of a different brand. Indeed, in recent history, there has been a loss (of what had been a healthy partnership between Churches of Christ and the Baptists in a combined local congregation) when one local church voted to become a Baptist Church only, which resulted in Churches of Christ losing a local church. ■



Gidgee's enterprising ways

From selling coffee to providing counselling and accommodation in the outback, our mission enterprises help us to reach out to more communities and individuals by providing services in remote areas.

In the small town on Cloncurry, a remote outpost, and one of the 'friendliest towns of the North West', the Gidgee Inn is a refuge for weary travellers and workers. It is not just a place for people to rest their heads of enjoy a meal. We also actively support the local community.

This year marks the town's 150th Anniversary, with the Gidgee hosting Sir Peter Cosgrove in June, who was town to take part in the celebration. He presented Inn managers Chimie and Katrease Moxham (pictured above with Sir Peter Cosgrove) with a special coin to mark his stay (picture inset).

Through the Gidgee Inn, we



are proud to support St Andrew's Cloncurry Mainly Music program. The program was been without funding and was nearly forced to close, however it has been saved and become an important community asset with 27 families attending.

The Gidgee Inn is also supporting the Cloncurry State High School Breakfast Program, operated by the Uniting and Anglican Churches. Left-over food from the breakfast buffet is provided to the School to ensure the breakfast program continues. ■

Churches of Christ in Queensland operates the Gidgee Inn to provide funds for Mission activities and is actively supporting projects and programs in the Far West Queensland

{ People & Events }

in our communities



Launch of vital SBB service

On 25 July, the innovative Youth CONNECT Social Benefit Bond was launched to market. Dr Paul Scully, Gerry Weatherall, Christine Crain (Queensland Treasury), Leanne Rutherford, Mike Folland, Sandy Blackburn-Wright (Social Outcomes).



Wild times at Clive Burdeu

Residents were thrilled to receive a visit from a ranger with an assortment of wild and exotic animals in tow. Residents were able to get up close and personal with snakes, baby crocodiles, owls, turtles and more.



25 Years of Shiloh

This year marks 25 years of Shiloh Church Ministries in Andhra Pradesh, India. The anniversary was celebrated with 600 people from across the Shiloh churches attending. Churches of Christ has had a long relationship with the ministry following founder, Pastor Raju's visit to Australia in 1992. Our churches and care services, particularly in Boonah and Fassifern, continue to support the vital work they do. Supporting widows, orphans, the unemployed, and in spreading the good news of Jesus Christ.

Kokoda level effort

A team of four members from our Children, Youth and Families services conquered the Kokoda Challenge in July. The team, comprising Regional Manager Rachel Robinson, Business Development Manager Luke Tempany, Service Manager Brent Iverson and young person Jeromy, completed the 96km trek through the Gold Coast hinterland. They were ably assisted by their support team of Molly Robinson and Nyketa Davies. Luke and Brent each completed the course in 30 hours, Rachel achieved 55kms and Jeromy 27km!



'Busy's' now open at Bribie

The popular 'Buck's' gym at Buckingham Gardens has now opened at our Bribie Island Aged Care Service. The innovative exercise equipment specifically for seniors has had wonderful results, and is being rolled out across a number of our services. Physiotherapist Craig Wilson, with Cr Brooke Savige and Deputy Mayor Mike Charlton from Moreton Bay Regional Council.

To market, to market

On Friday 4 August staff from the Kenmore Head Office and beyond gathered for the annual Farmers Market to raise money for our Community Chaplains. With staff manning stalls of donated goods, including bric-a-brac, succulents, sweets, coffee, books, burgers, veggies and more, it was a wonderful day in the winter sunshine. Staff attended with deep pockets, raising over \$5,000, surpassing last year's total by over \$1,000. Mike Folland, left, won best dressed on the day!



Westside's 40 years celebrated

40 years ago the Centenary Suburbs were new and growing. Young families were moving to the area to live their dream. It was at that time that 38 people from the Kenmore Church of Christ decided to establish a church in this new area, south of the river. It is very fair to say that the Westside Church of Christ has positively impacted many thousands of people in this community with the light of Christ over the past 40 years. It is exciting to think about how the church will continue to serve our community in the next 40 years.



Rivers Church's garden for all

Pastor Luke Skipper of Rivers Church of Christ and volunteers from Moreton Bay Community Matters have transformed 300m² of bare dirt into a garden overgrown with potential. The community garden is open to everyone and has taken root in the philosophy of community support. All the seedlings were donated by local businesses. "We want a bigger, more holistic care of the community. We want to provide a safe place of acceptance and belonging," Pastor Luke Skipper said.



Volunteer of 15 years farewelled

For the past 15 years, Anne Neasham has donated her time as a pastoral care volunteer at Fair Haven Aged Care Service Hervey Bay. On 14 July, Anne was joined by a group of friends and colleagues who bid her farewell. They had a lovely time reminiscing about her time at the service. From left, Athea (Pastoral Care Volunteer), Kris (Fair Haven Resident), Anne and John Neasham, Coral (Fair Haven Resident), Suzanne (Pastoral Care Volunteer)



Chance meeting on outing

Residents from our Lady Small Haven Retirement Village at Benowa were enjoying an outing to visit a number of our new buildings, when they ran into Queensland Police Commissioner Ian Stewart. The group were enjoying morning tea at Gardenway Mount Ommaney when they ran into Queensland's most senior police officer. On their tour the group visited our campuses at Acacia Ridge, Kenmore and Mitchelton.



Hope for the future in the toughest of places

Words by: Andrew Menzies,
Principal at Stirling Theological College - University of Divinity

There is a small group of Australian Christians who choose to live in one of the toughest places in Asia.

Bangkok is well known to many Australian tourists who pass through its very big international airport and bright lights as a hot, commercial mega-city. Far less people see what life is like for the poorest of the poor just around the corner from the busy tourist strip.

The urban poor in Bangkok are often folk who have left the rural provinces to make a bid for survival in the big city. It is a hard choice to leave rural poverty for urban poverty and the crime, drugs, political instability, disease and cramped conditions of a dock-side slum filled with 100,000 people in a square kilometre.

It also seems hard for many of us in the comfort of Australia to even think about leaving all this to live in such a place. And yet a team of four Australians commissioned by Churches of Christ (Camille Beckingham, Alisha Fawlkner and Chris and Jodie



McCartney) and another couple from the United Kingdom (Jon and Elise Fletcher) along with their children have done just that. They have downsized radically, learned the Thai language and culture and become Christian neighbours to the Buddhist poor in an area called Klong Toey. They are called Urban Neighbours of Hope and their story is amazing. We should be so proud, prayerful and supportive of them.

They are attentive to the needs of their

neighbourhood firstly by living there. They also are attentive to the openings that God brings by breaking bread each morning on the floor of one of their homes and praying together. They are joyful and passionate people who touch everyone they come near. They are also ongoing theological students at Stirling College (through online study) where they continue to learn theological reflection and biblical principles for the mission, community development, micro business development, counselling, pastoral care, evangelism and contextual church planting as they do it.

They are a new kind of missionary: ongoing learners and attentive neighbours who bring God's hope for the future in a very dark place. Jesus said, "I have come into the world as a light, so that no one who believes in me should stay in darkness" (John 12:46). Urban Neighbours of Hope are an example of how eternal work can overlap with present need and in the process, bring hope for the future. ■



Holiday travel to the Holy-lands with your kids and grandkids

Have you ever dreamed of travelling to the Holy Lands with your kids or grandkids?

This is a wonderful opportunity to travel as a family to Israel. We have tailor-made the itinerary to be fun and interactive for children as well as adults. Make those Bible teachings come to life for you and your children. Transform your faith as you walk where Jesus walked!

Add historical and World Heritage sites in Jordan to cap off this family trip of a lifetime.

Toboggan in the snow at Mt Hermon and in the desert sand at Wadi Rum. Swim with dolphins in the Red Sea. Visit Petra and six other World Heritage sites during the 19-day tour.

Planning an Israel family holiday presents an exciting opportunity for your family to learn about faith, culture and history. This tour is a unique opportunity for younger family members that is not only informative, but fun!

Explore a country that takes you on a journey to the Holy Land's most sacred places. See history unfold before your eyes by visiting the sites from the Bible and enjoy the beautiful winter weather and delicious Israeli cuisine.

You will be ably led on the tour by John Rutherford, with this his fifth tour to Israel and Jordan.

"Come join me at some of my favourite places!" ■

For more information, visit missiontravel.com.au/family-israel or contact 1300 554 654.

National Youth Ministry Convention

October 9 - 11
on the Gold Coast

The National Youth Ministry Convention is a three-day event held at Sea World Resort on the Gold Coast from 9 - 11 October, and will bring together hundreds of delegates to learn from some of the world's most inspirational, challenging and practical speakers.

We have scoured Australia and beyond to secure three incredible Keynote Speakers for NYMC17: Mark Savers, Enuma Okoro and Steve Chong. This will be an experience and movement not to be missed!

NYMC 17 will also feature professional development seminars and five elective streams featuring twenty different speakers and more topics than you can imagine. If that isn't enough for you there will be loads of time to connect with others through lunches, access some of the most innovative youth ministry resources at the Ministry Expo, and celebrate with other delegates during some amazing worship times.

You're invited to join us for this fantastic time of learning, equipping and networking and we hope to see you at the 2017 National Youth Ministry Convention.



YOUTH WORKERS | CHAPLAINS | PASTORS | TEACHERS | VOLUNTEERS

REGISTER TODAY AT NYMC.ORG.AU



Beryl Wiltshire Scholarship

For study towards a career in the caring profession

Beryl Wiltshire AM was a highly respected leader in welfare and community work in Australia especially during her long and distinguished career with Churches of Christ Care. She was also Queensland Mother of the Year and received the order of Australia for service in the field of social welfare on Australia Day 1996.

She was a friend, counsellor, and mentor, to any who were in need and sought her help and advice. Beryl had a particular talent for identifying the potential in people and quietly assisted many with funding for their education and training to get them started in their career. This scholarship continues the tradition she established and is designed to meet the tuition and associated costs of a person or persons who wish to embark on a career of

service with the social, welfare, human services, and caring sector. An annual sum of \$5,000 is available to fund one or more scholarships for study towards qualification at any educational or training organisation, which may lead to a career in the caring profession. The scholarship is open to persons of all ages and there are no conditions for candidacy.

Candidates should outline the nature of the career they wish to pursue, their motivation for undertaking study towards the relevant qualification, the course they wish to undertake towards this career, and give details of the likely annual tuition and associated costs (fees, books, equipment etc).

Preference will be given to applicants who do not have access to study assistance programs in their employer organisations. ■

Please prepare an application including the following (attach full details):

- Name
- Address
- Phone
- Reason for applying for this scholarship including personal goals
- Career being contemplated
- Reasons for choosing this career
- Education / training course etc to be undertaken including the name of the course and qualification and institution for study eg: training organisation, college, university
- Duration of course
- Annual costs to be funded: including tuition fees and associated costs
- Names and contact details of two referees

Please send completed application form by 30 September 2017 to:
Beryl Wiltshire Scholarship
30 Gregory Street, Clayfield Qld 4011
Further enquiries: 0418 713 593

{ Events }

Find us on 

September

SEPTEMBER 1 - SEPTEMBER 30

Dementia Awareness Month

SEPTEMBER 3

Father's Day

SEPTEMBER 3 - SEPTEMBER 9

National Child Protection Week

SEPTEMBER 14

R U OK? Day

SEPTEMBER 21

International Day of Peace

SEPTEMBER 21

World Alzheimer's Day

October

OCTOBER 8 - OCTOBER 14

Mental Health Week

OCTOBER 9

Grandparent's Day

November

NOVEMBER 4-5

Girls Getaway Weekend

NOVEMBER 11

Remembrance Day

NOVEMBER 16-17

Ministers Forum

NOVEMBER 16

Annual General Meeting

NOVEMBER 25

White Ribbon Day

December

DECEMBER 25

Christmas Day

DECEMBER 26

Boxing Day

January

JANUARY 16-20

FUSE Camp

February

FEBRUARY 14 - MARCH 29

40 Days of Prayer

March

MARCH 8

International Women's Day

MARCH 30 - 2 APRIL

Easter

Churches of Christ in Mission

REGISTER BEFORE
29 SEPTEMBER
gcm.org.au

Great Commission Ministry is inviting Churches of Christ churches across Queensland to consider catching the vision of each church and reaching 1,000 homes with a presentation of the Gospel "IS THERE A GOD" and an invitation to your Christmas carols, or any other special Christmas event your church will be hosting in December 2017.

One of the Directors of this mission organisation is a long-standing Church of Christ minister, Pastor Noel Newton and his wife Tricia. Noel commenced ministry at Acacia Ridge Church in 1968.

If every Church in Queensland participated in this Mission outreach, we would reach 60,000 homes and some 150,000 people.

Great Commission Ministry will do

all the work for you by providing the envelopes, the Evangelistic Booklet "IS THERE A GOD and I LIVE forever". They will print on the back of a DL a photo of your church and all the details of your special event.

This resource is free of charge (however, if you are able to make a donation towards this vision it will help to balance the budget).

All your church will need to do is provide a few people to deliver these 1,000 envelopes to your community and to pray for God to use this outreach and material to encourage people from these homes to read the booklet and come to your Christmas event and discover the Christ of Christmas who offers salvation and hope to every home around your

Bringing the light of Christ
into communities



cofc.com.au

