

# ISSUE 4 {2017} networking

BRINGING THE LIGHT OF CHRIST INTO COMMUNITIES

You create a  
**beautiful** world



## Mission in action in our communities

Find out how our Mission Action Partners are bringing the light of Christ into communities.

## Developments powering ahead

It has been a big year for our developments and major projects.



**Churches  
of Christ**  
in Queensland

# { Contents }

Find us on 



8



11



12



16

“ **Ecclesiastes 3:11**  
He has made everything beautiful in its time. He has also set eternity in the human heart; yet no one can fathom what God has done from beginning to end ”



23



14



33



22



36

From the Editor	4	Time to innovate	15
Chief Executive Officer update	5	Response to the displaced	16
Council and Board update	6	Journey with us	18
134th Annual General Meeting	7	Mission in action in our communities	20
You make beautiful things	8	Darling Downs Women's Retreat	22
Dean Phelan tribute lunch	9	Safe harbour from rough seas	23
Spiritual mentoring	10	Love in action	25
Challenging poverty and empowering women	11	Ipswich locals find power in numbers	26
Developments powering ahead	12	Heart and soul recognised	27
Kurrajong now called home	14	Cairns Street Chaplains	28

Edna's excellent adventure	30
Fitness at any age	31
Stellar turnout for clubhouse opening	32
Great figures from our history	33
Volunteers make for more pleasant stay	35
People and events	36
Real world experience	38
Events	39

## networking

Churches of Christ in Queensland  
41 Brookfield Road Kenmore Qld 4069  
PO Box 508 Kenmore Qld 4069  
07 3327 1600  
communications@cofcqld.com.au

*networking* contains a variety of news and stories from across Churches of Christ in Queensland. Articles and photos can be submitted to [communications@cofcqld.com.au](mailto:communications@cofcqld.com.au). The submission deadline for the next edition of *networking* is 6 February 2018.

Pacesetter Laser Recycled is 30% recycled and made from elemental chlorine free bleached pulp sourced from sustainably managed sources. It is manufactured by an ISO certified mill.





“ I would like to wish you, your family and loved ones a blessed and safe Christmas and New Year. ”

“ The first gift wasn't found under a tree. It was found under a star. **Isaiah 9:6** ”

**W**elcome to this edition of Networking. I am sure you will all agree that 2017 was a whirlwind of a year. It feels like it has come and gone in a flash. Needless to say, while it has flown, there has also been so much happen.

We welcomed our new Chief Executive Officer Dr Paul Scully; continued progress on our major developments across Queensland; acquired more new services; completed a new housing development; continued our focus on early intervention and helping vulnerable families; worked with local communities to address needs; counselled and assisted the vulnerable; and continued to deliver the Word of Jesus Christ through our mission communities.

In November we held our 134th Annual General Meeting, where we released our Annual Report 2016-17 (pictured below). If you would like a full appreciation for the breadth of our services and our reach into the communities we serve, I encourage you to peruse its pages. You can read it online at [cofc.com.au/publications](http://cofc.com.au/publications). It also contains some of our inspirational stories from throughout the year.

We have a wrap up of what happened

2016-17  
ANNUAL REPORT



at the Ministers Forum and the Annual General Meeting over 16 - 17 November. The cover image of this edition features some of those involved with the Ministers Forum. Our new auditorium on the Kenmore Campus was a wonderful backdrop to these events. I encourage you to visit our new Kenmore Campus. You can visit the onsite café and enjoy a coffee and chat overlooking the landscaped surround.

We also have an update on the completed extension to our Stanthorpe aged care service, progress at Warwick and the opening of their clubhouse, and how Meridan, Boonah and the Gold Coast are coming along.

We are able to assist thousands of vulnerable people every year, but did you know that a number of our services, including our community chaplains, our CYCLE program for young people and our medical clinic in Vanuatu receive no government funding? Read about how we are funding our mission, and how you can get involved.

In 2018 we are destined for another big year as we continue our journey and bring more light and beauty into our communities, and I look forward to continuing to tell your stories.

From 14 February to 29 March, we will once again unite in 40 Days of Prayer. You will be able to take part by going to [cofc.com.au/40daysofprayer](http://cofc.com.au/40daysofprayer) during this time.

I would like to also wish you, your family and loved ones a blessed and safe Christmas and New Year. I look forward to bringing you more stories and keeping you informed about happenings.

*I hope you enjoy this edition of Networking, as we explore how we are making the world a more beautiful place by living our mission and bringing the light of Christ into communities.*

**Desley Millwood**  
Executive Officer Communications



**I**t was a privilege to attend and present at the Ministers Forum and Annual General Meeting in November, and to meet so many individuals from across our movement. Mandy Smith's presentations clearly spoke to many people as she explored how God can work through our weakness.

One of the things I shared was about our future, which has been a topic a number of people have asked me about. There are goals we want to build on such as:

- Grow our Senior services and ensure families are confident that their loved one's are safe with us.
- Expand our footprint in terms of housing and in particular enhance our resident's wellbeing by fostering community within our housing developments.
- We also want to ensure children are not harmed when with us and that we help foster better outcomes when they are in our care.

Yet, our vision for the future is to be fully articulated. We have said we want to transform people's lives and to bring uplift into dark places with the light of Christ. We want to grow our kingdom access places including our churches. I would pray we do this and more, because we become an organisation where people are known for their character. Our character will clearly be one of unconditional love, behaving with integrity and good stewards. In time when the world is losing trust in

institutions and people are polarized I envisage when people make contact with the Churches of Christ they know we are trustworthy in all we do.

I hope we can continue building on the many accomplishment from the last year which were presented at the Annual General Meeting. Over the past 12 months, the Board made a number of important decisions, endorsed plans, and approved significant investment, ensuring we progress against the four priorities of our strategic plan.

In brief, some of our achievements include:

- Held 40 days of prayer from 1 March - 9 April across our movement
- Held our largest Centrifuge event in June, with over 350 participants
- Had the majority of our churches represented on Strategic Action Leadership Teams
- Number of Kingdom Access Places increased to 398
- Released our second Innovate Reconciliation Action Plan and forged stronger relationship with the Department of Aboriginal and Torres Strait Islander Partnerships
- Churches of Christ Medical Santo medical clinic on Vanuatu continues to develop and extend its care and ministry
- Completed the Kenmore Campus redevelopment, with the Ministers Forum and AGM held in the new community centre
- 40,000+ people regularly connect with our Kingdom Access Places
- Appointed Jane Carter as Children and Youth Advocate to ensure we are a child safe organisation.

The Board and I are preparing the development of the new strategic plan and we look forward to engaging our stakeholders to help clarify what we believe God wants us to do going into the future.

We want to also flag a final report of the Royal Commission into Institutional Responses to Child Sexual Abuse. We will be required to make other changes to ensure we meet clear standards of

keeping children safe.

On 1 December, we welcomed two aged care services to our family in Ingham and Acacia Ridge. I would like to warmly welcome the residents, staff and families of The Palms and Mortimer Aged Care Services and promise to provide the highest quality care and services to you.

At the end of November, we started welcoming residents into the new extension at Stanthorpe Aged Care Service. This state-of-the-art development sets the standard of care on the Southern Downs. We look forward to opening the new Warwick campus including aged care service in 2018.

Next year is shaping to be another mammoth year as we continue our path of growth. We will be setting out our direction for the coming years as we prepare our next Strategic Plan.

I would like to thank David Swain, who finishes with Churches of Christ in Queensland after a 15 years of fruitful and faithful service with us. David was the Chief Operating Officer since 2014, and more recently acted as Chief Executive Officer during the first-half of 2017, and provided strong leadership during a time of uncertainty.

On behalf of Churches of Christ in Queensland, I would like to extend our thanks to David for ensuring the organisation maintained momentum and focus, and for his heartfelt engagement with staff across the organisation.

As the year fast comes to a close, and with 2018 upon us, I would like to thank everyone who is a part of the Churches of Christ movement and for your contribution to our shared mission of bringing the light of Christ into communities. It has been another big year, and collectively we have made a difference in so many ways.

I pray you have a blessed and happy Christmas. May it be a time of love and peace for you, your family and loved ones, and that 2018 will be prosperous and full of possibilities.

**Dr Paul Scully**  
Chief Executive Officer



■ New Conference Council members were welcomed at our 134th Annual General Meeting. Left to right: Steve Peach, Gary Edwards, Geoff Runge, David Taylor, Vicki Marney, Steve Nixon, Andi Owen, Chris Downes, Kevan Denny, Paul Scully, Geoff Charles.

## Council and Board update

**A**t the Annual General Meeting (AGM) on 16 November, the voting for the Conference Council members took place. This year, Geoff Charles led the Council after taking the reins from Greg Runge at the 2016 Annual General Meeting. We welcome new members Vicki Marney from Toowoomba North Church of Christ, David Taylor from Rivers Church of Christ, Kevan Denny from Sunnybank Church of Christ and Geoffrey Runge from Sanctuary Park Church of Christ.

### Northern exposure - North Queensland visit

In August, our Board and Conference Council visited our churches and services in Far North Queensland with our Mission Action Partner Phil Bignill as the guide.

Chief Executive Officer Dr Paul Scully said the Board and Council were "absolutely thrilled to see how much passion all of our staff and churches have for our clients and the amazing work that they do".

The group started their tour in Townsville visiting the Children, Youth and Families services, followed by a morning tea at St James Retirement Village. The Townsville Church of Christ hosted a barbecue lunch and presentation with members of the

congregation, followed by a tour of the Men's Shed.

The group travelled to Cairns from Townsville, stopping in to view our recent acquisition at Cardwell, Rockingham Aged Care Service, and a few other sites along the way. The service shared some amazing stories on how they got through the cyclone and made sure that all the residents were safe.

That Friday evening, some members of the group also visited our Cairns Street Chaplains in action, where



■ Members of Churches of Christ in Queensland's Council and Board enjoyed visiting our churches and services in far north Queensland.

volunteers from the church community give water and assistance to young people enjoying a night out and make sure they get home safely, as well as offering a friendly ear for those who would like a chat.

While in Cairns, the leadership of The Lakes Church and the Board and Council shared a meal together and gave a presentation on the many ministries of the church.

They also visited and had lunch on the Saturday at our Access Place café in Atherton.

"Community Chaplain Kerry Parry and staff were amazing and shared some of the great stories that have touched people's lives through the café. Not to mention the food, which was great," said Chief Executive Officer Dr Paul Scully.

As the final stop, they visited Vincent Mathieson at Mareeba Church of Christ and other church members. Many Mareeba locals are in desperate need of housing and the church is hoping to put up four dongas to assist, with hope for extra funding to put up more.

It was a great trip for the Board and Council members to be able to see the impact that we are having in the Far North and how we are bringing the light of Christ into communities in many different ways. ■

**R**epresentatives and delegates from churches, staff and other members of the public attended the AGM at the Churches of Christ Campus Kenmore, in the new auditorium.

As part of the meeting, Chair of the Board Gary Edwards provided an update, presenting key highlights from a massive year.

The 2016-17 Annual Report was tabled and adopted by the voting members, and delegates from our churches voted four new members to the Conference Council. Council Chair Geoff Charles officially welcomed Vicki Marney, David Taylor, Kevan Denny and Geoffrey Runge.

Under our Constitution, the Council is made up of up to 10 members elected at an AGM, plus the Chair of the Churches of Christ in Queensland Board and the Secretary in a non-voting capacity.

Those elected serve a three-year term, with the option to re-nominate for another term (to a maximum of three terms).

Delegates also voted and accepted proposed changes to the Constitution for Churches of Christ in Queensland. ■



# 134<sup>th</sup>

On Thursday 16 November we held our 134th Annual General Meeting

annual GENERAL meeting



■ The Churches of Christ in Queensland Board. Left to right: Steve Muller, John Adermann, Gary Edwards, Rilla Roberts, Jill Gray, Ken Ewald, Doug Sparkes, Paul Scully, Geoff Charles.





■ Mandy Smith, Senior Pastor at the University Church in Cincinnati, was the keynote speaker at the Ministers Forum.

## You make beautiful things

Over 16-17 November, ministering persons from across our Churches descended on Kenmore for the Minister's Forum.

Attendees engaged in the theme of "You make beautiful things".

The forum was a chance for ministers from across Churches of Christ in Queensland to gather together. This means pastors, chaplains, defence padre's, youth and children's ministers, missionaries, elders, Mission Action

Partners and everyone in between.

There is an old saying that we should 'work like it all depends on us and pray like it all depends on God'. Unfortunately, most of us have bought into the 'work like it all depends on us bit' but aren't so good at trusting in and relying on God to bring the much needed resources to complete the work.

At this year's event, Mandy Smith - originally from Brisbane and now the Senior Pastor of the University Church in Cincinnati - was invited to challenge ministers about what it means to take up a new, more realistic posture in terms of how we co-work with God in His mission. To rethink what Paul meant by saying, 'That is why, for Christ's sake, I delight in weaknesses, in insults, in hardships, in persecutions, in difficulties. For when I am weak, then I am strong'.

She reminded us that since the beginning of time, God has been in the business of making beautiful things out of nothing.

The range of elective sessions allowed ministers to up-skill in a range of ministry related topics, with creative opportunities for worship, reflection and discussion, all crammed into an encouraging two days. ■



■ Chief Executive Officer Dr Paul Scully shared a reflection of his life in Churches of Christ.



## Dean Phelan tribute lunch

On Friday 17 November, approximately 120 people attended a special tribute lunch for past Chief Executive Officer Dean Phelan.

About 120 guests joined Dean and his family at Hillstone St Lucia to celebrate the wonderful contribution Dean has made to our Churches of Christ in Queensland.

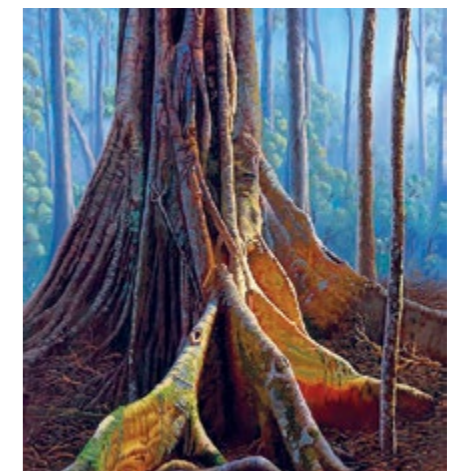
Members of our churches, Council, Board and services, both past and present, took the opportunity to say thank you, with a number sharing their tales of Dean and his time as leader of Churches of Christ in Queensland.

In 2010, Dean and his wife Janette moved from Victoria so that Dean could take up the position of Chief Executive Officer.

Greg Runge, Geoff Charles, Gary Edwards, Rilla Roberts, Janette Phelan and others, took to the podium to thank Dean for his contribution.

Gary Edwards (pictured top with Dean) presented Dean with a special gift—an oil painting, "The Fig Tree", by Julie Cane (pictured right).

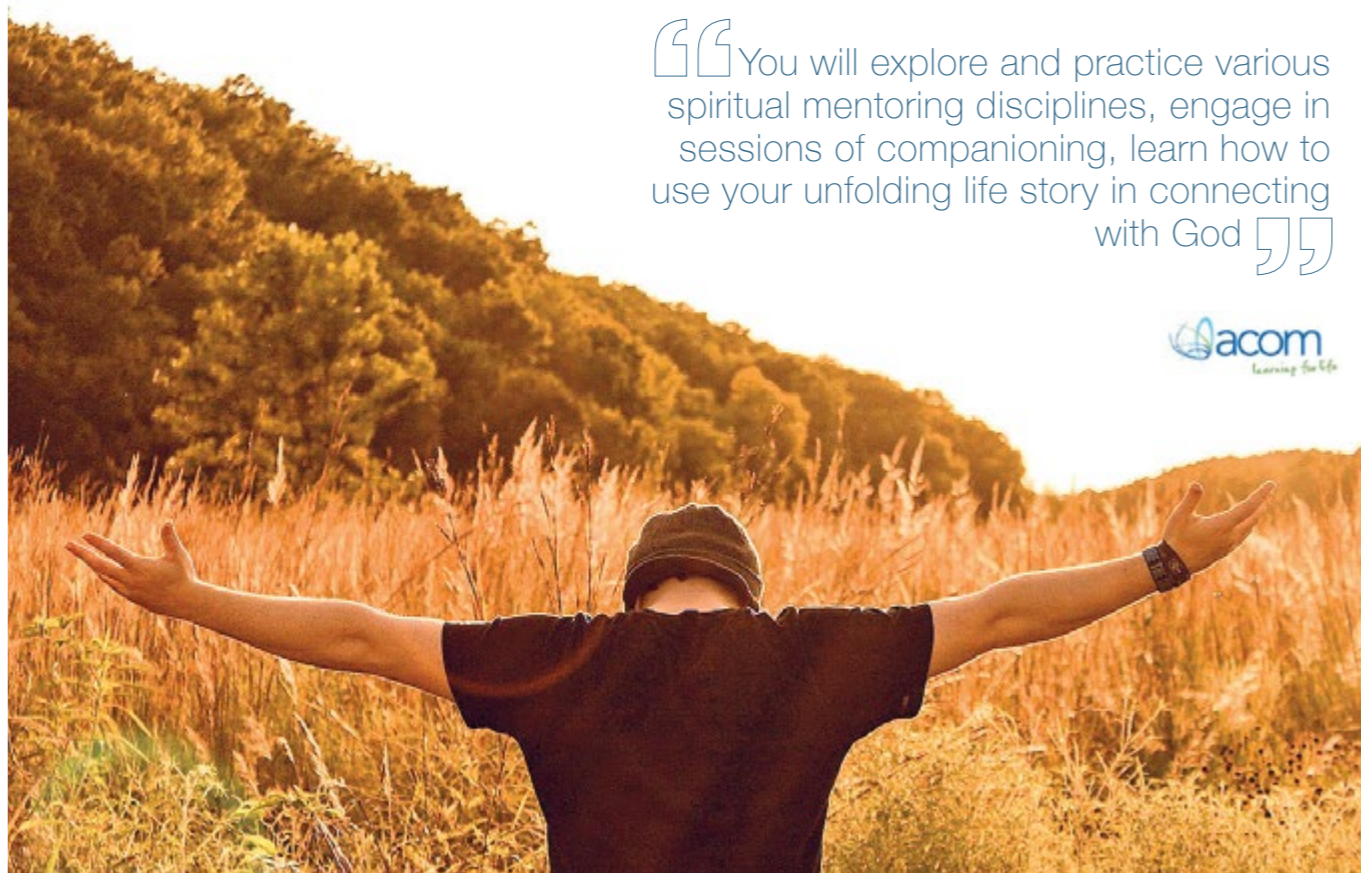
This lunch was a special tribute to Dean and we wish him all the best for his future endeavours. ■



### The Fig Tree

*The Moreton Bay Fig, like the parable of the mustard seed told by Jesus, starts from the smallest of seeds, growing into the largest of rainforest trees. It nourishes, protects, and provides shelter to many over the course of its lifetime. Dean, may this painting be a reminder of the seeds that you have scattered in your time as CEO, bringing the Kingdom of Heaven to many far and wide. May it also symbolise the mighty tree that has emerged within you over a life of dedication to the word and work of Christ, and which has brought comfort, support, and hope to those with whom you come in contact. With best wishes from your colleagues in mission.*





“You will explore and practice various spiritual mentoring disciplines, engage in sessions of companionship, learn how to use your unfolding life story in connecting with God”



## Spiritual mentoring

**A** renewing journey of learning, experience and practice that will form and equip you to be a better spiritual companion and mentor.

While reaching into your own spiritual journey, you will explore and practice various spiritual mentoring disciplines, engage in sessions of companionship, learn how to use your unfolding life story in connecting with God, train in different ways to listen and to ask questions and experience different approaches to discernment.

You will be part of a cohort on a two-year journey together, meeting for six, three-day retreats facilitated by Churches of Christ in Queensland’s Deeper Rhythms team, including Bruce Warwick, Graham Keech and Chris Gribble.

You will complete four subjects through ACOM (at undergraduate or postgraduate level), including:

1. Introduction to Christian Spirituality
2. Spiritual formation
3. Spiritual mentoring
4. Discerning God’s will together

The retreats will give you hands-on personal engagement with the subject material and the opportunity to learn and practice your skills.

You can also do the course without studying for academic credit, and without the study load and assignments. Simply enrol to take part in the six retreats.

Registrations close 17 December 2017. For more information contact Bruce Warwick on 0418 363 604.

### About the facilitators Bruce Warwick

Bruce has extensive experience as a facilitator and trainer and has worked with pastors, leaders, chaplains, theological students and many others, coaching, mentoring and providing spiritual direction.

For the past eight years, Bruce has been the Pastor to Pastors for Churches of Christ in Queensland. He has served on the Australian Ecumenical Council for Spiritual Direction, and is currently leading a formation course for people wanting to serve as spiritual directors.

### Graham Keech

Graham was ordained as a Minister of the Word in the Uniting Church in Australia just before he turned 25. He then serviced in rural north Queensland, Ipswich and, for nearly 17 years, he was the Senior Minister at Logan Uniting Church.

Graham is a member of Churches of Christ in Queensland’s Deeper Rhythms team, offering personal and spiritual formation to managers, leaders and pastors.

### Chris Gribble

Chris has been part of Churches of Christ in Queensland for more than 25 years as a pastor and chaplain. He is currently the Senior Pastor at Highfields Church of Christ. For the past 15 years he has mentored church and business leaders and led minister’s renewal groups.

In 2015, Chris graduated from the Centre for Courage and Renewal, and uses the principles he learnt to encourage others in spiritual formation. ■

# Challenging poverty and empowering women in Vietnam

**M**any women have travelled to mission fields in faraway places, bringing the good news, health and education to local communities. Our history makers must have had buckets of courage, passion, grit and determination, and today’s women working in mission must also be gifted with these same qualities. One such woman is working for God in Vietnam.

“It was a call on my heart to come to Vietnam,” founding director of NGO Bright Solutions Fiona Briers said.

“Vietnam is progressing rapidly, and giving many young people brighter futures. Through access to higher-levels of education, English language, international studies and better business prospects, Vietnam is advancing. However, the majority of the population cannot access these options due to lack of or incomplete years of schooling, limited skills and inability to train or retrain, missing gaps in their childhoods, and so on.”

Fiona believes Bright Solutions can give access to these options and positively impact the lives of underprivileged women in Vietnam. Her passion for Vietnam and improving the lives of marginalised women in Ho Chi Minh City is evident upon meeting her.

“My heart and passion is to serve and empower the poor. To do what I can with the skills and experiences I have to enrich the lives of others. My belief is that the poverty cycle is often generational due to tragic or difficult circumstances and a lack of education.”

Bright Solutions helps women to successfully manage their futures and finances by training them in practical skills, including sewing and handicraft, alongside education in management and life skills. The women are put through programs that help them to continually increase their skills and expertise, with a strong emphasis on managing finances.

Bright Solutions offers vulnerable women an opportunity to lift themselves out of poverty. The women make vibrant, exquisite, and intricate handicrafts made with fabrics unique to Vietnam. The activity books, toys and decorations are made with attention to detail and quality in an atmosphere of hope and affirmation—a sharp contrast to the women’s past experiences.

Fiona says the light of Christ “shines bright in our local churches for mission. I am looking forward to continuing to work with teams from our local churches, partnering with others overseas, sharing the light of Christ in their communities”. ■

*Vicki Marney is Partnership Coordinator for Queensland and Vanuatu for Global Mission Partners.*

*Want to know more about how you can connect with Mission? Go to [gmp.org.au](http://gmp.org.au)*

*Bright Solutions products are marketed in Australia through GMP and can be purchased on line at [brightsolutionsvietnam.com](http://brightsolutionsvietnam.com)*



# Developments powering ahead

It has been a mammoth year for our capital development projects. We are committed to providing state-of-the-art facilities in integrated community models to provide the best possible support and outcomes for the people who live there and the local community.

We are in the midst of an exciting phase, with developments at Stanthorpe, Kenmore and Kallangur completed, and others taking shape.

The community centre at Churches of Christ Campus Kenmore hosted its first event in November, with the Annual General Meeting and Ministers Forum taking place in the 350-seat auditorium.

The Stanthorpe Aged Care Service is now welcoming new residents, who get to enjoy the best the Southern Downs has to offer, with stunning vistas and the highest quality of care.

Meanwhile, in nearby Warwick, construction of the campus, including community centre, café and 128-bed aged care service, is steadily progressing and due to be completed in mid-2018.

The Clubhouse at the retirement village adjoining the Warwick development, which will form part of the integrated campus, was officially opened in October, ahead of schedule and under budget.

Chief Executive Officer Dr Paul Scully said it was wonderful “to be able to attend the opening of the long-awaited clubhouse, and understand how the central facility will positively impact the life and culture of the village”.

“The residents were all very excited for it to be open and there to be enjoyed.”

On the Sunshine Coast, the development of a community hub and seniors living campus in Meridan is progressing, with approval pending from the Council to open the campus



“The residents were all very excited for it to be open and there to be enjoyed”

to the wider community to enjoy the café, community centre and swimming pool facilities. Construction is due to be complete in late-2018.

In the beautiful Scenic Rim town of Boonah, a development application has been lodged to extend our Fassifern Aged Care Service and Retirement Village, with an answer expected soon.



■ Clockwise from top, Kenmore community centre, cafe space, the new Regency Park Retirement Village clubhouse, development progress at Meridan in November, and the Warwick development at November.

Recently, our intentions to develop our services on the Gold Coast were announced, with thorough and detailed planning taking place.

“I would like to thank everyone for their patience and support throughout 2017 as we have made these developments a reality. We look forward to an even bigger 2018, with more developments in the pipeline and the completion of our state-of-the-art integrated communities in Warwick and Meridan,” Paul said. ■

Stay up-to-date with our development projects at [cofc.com.au/developments](http://cofc.com.au/developments).

“I would like to thank everyone for their patience and support throughout 2017 as we have made these developments a reality. We look forward to an even bigger 2018, with more developments in the pipeline”

## Gold Coast development planned

We have been investigating the redevelopment of two of our Gold Coast services, which require work due to the age of the facilities.

The Gold Coast City Council has given preliminary Master Plan development approval for our Lady Small Haven service at Benowa and Golden Age service at Southport.

Director of Seniors and Supported Living Bryan Mason said the organisation was taking a thorough approach to planning for the redevelopment.

“There are still many matters to be resolved, decisions to be made and approvals obtained, and we will be undertaking additional design work, which we will share with residents once complete,” Bryan said. “I want to assure our residents are our top priority—now and at all times going forward. We want to ensure that they have the best quality of life.”

Keep up-to-date with the project at [cofc.com.au/developments](http://cofc.com.au/developments)

From the north to the south, more seniors receive care

**R**ounding out 2017, a year that has seen major developments at the forefront of our growth, we are also pleased to welcome two new residential aged care services at either ends of the state.

Palms Aged Care Service in Ingham and Mortimer Aged Care Service in Acacia Ridge joined our 29 other aged care services on 1 December.

Director of Seniors and Supported Living Bryan Mason said that we are committed to providing the highest quality care in a supportive environment.

“Our first priority is the wellbeing of Palms and Mortimer residents and staff, and our primary focus is maintaining quality care services and lifestyles for the current residents,” Bryan said.

“Residents, families and staff will be fully consulted throughout the transition process.”

“We are excited to have Palms and Mortimer join our family and support more seniors in regional and metropolitan areas.”

Palms Aged Care Service will join Rockingham Aged Care Service in Cardwell as a destination for seniors care in Far North Queensland, while Mortimer Aged Care Service is situated next to the Churches of Christ Campus at Acacia Ridge, which includes aged care, retirement living and seniors housing services all at the one location. ■



## Kurrajong now called home

**I**n November 2016 local home owners Ian and Neva Handy generously donated a parcel of land in Duffield Road, Kallangur to Churches of Christ Queensland for affordable housing. With a vision to help others, they were determined make a difference in their community. The underutilised parcel of land has now been transformed into 50 townhouses with a mix of one, two and three-bedrooms.

The Kallangur development offers high quality affordable homes, which will have particular appeal to low to middle income earners caught in the gap between social housing and soaring private rental costs. The townhouses have been designed with contemporary living in mind with the convenience of a community centre where residents can reserve places for events and green spaces for community gardens.

The townhouses are available for lease now, and tenants are moving in, with all townhouses expected to welcome their new tenants before Christmas. All one bedroom

townhouses have now been leased.

General Manager Frances Paterson-Fleider said we are very excited that residents have commenced moving into to our affordable living project. There are many working households for whom private rental is unaffordable and home ownership is out of reach. It is our role to provide these households with secure and affordable housing so they can contribute to society and be connected to their communities.

“Our vision is to empower communities through quality housing solutions and enhance the lives of individuals by providing safe, secure and affordable homes that people want to live in,” Frances said.

The organisation as a whole is committed to sustainable and continued growth. Churches of Christ Housing Services currently manage over 1,200 properties across 14 local government areas and are one of the most diverse providers in Queensland with expertise in property and tenancy management, specialist support services, community development and asset management.

“As an organisation, one of our priorities is in building capacity and we can no longer look to others to solve the problems our community face, we must be active about seeking opportunities, to boost affordable housing supply,” she said. ■

**To enquire about leasing at Kurrajong Townhouses contact Churches of Christ Housing Services on 07 3327 1674 or email [affordableliving@cofcqld.com.au](mailto:affordableliving@cofcqld.com.au)**

# Time to innovate Reconciliation Action Plan II

**O**n 11 October we proudly launched our second Innovate Reconciliation Action Plan (RAP).

Chief Executive Officer Dr Paul Scully said the plan continues our commitment to reconciliation with Aboriginal and Torres Strait Islander peoples.

“Reconciliation describes the path we must take to realise a future when Aboriginal and Torres Strait Islanders and other Australians stand together as equals. By walking this path, we have the opportunity to contribute to realising the mission and values of Churches of Christ in Queensland,” Paul said.

“The plan forms our public commitment to improving the way we engage and work with Aboriginal and Torres Strait Islander peoples—as clients, colleagues and communities.”

Churches of Christ in Queensland released their first Reconciliation Action Plan in 2015.

“The launch of our first Reconciliation Action Plan heralded a new era of recognition and commitment to Aboriginal and Torres Strait Islander peoples for our organisation, and we have successfully implemented a range of actions right across our business.

“We have built stronger relationships with communities and new partnerships with Indigenous organisations. We procured \$3.5 million worth of goods and services from business accredited by Supply Nation, and we have been working at greater recruitment and retention of Aboriginal and Torres Strait Islander staff,” he said.

Endorsed by Reconciliation Australia,



### About the artwork 'Bringing the light'

*This artwork was created by Jenna Lee, Larrakia descendant and Senior Artist from creative agency Gilimbaa, which specialises in creating Indigenous designs and campaigns. It was commissioned to represent how Churches of Christ in Queensland supports those in our care. More information about this artwork can be found on Page 1 of the Innovate RAP.*



■ Dr Paul Scully (centre) with Corie Taylor (left) and Lindy Drew-Tsang with the Innovate Reconciliation Action Plan.

the Reconciliation Action Plan program is a framework for organisations to realise their vision for reconciliation.

There are four different types of plans within the program: reflect, innovate, stretch and elevate.

The release of our innovate plan is for organisations that have developed relationships with their Aboriginal and Torres Strait Islander stakeholders and are ready to develop or implement programs for cultural learning, Aboriginal and Torres Strait Islander employment and supplier diversity.

An innovate plan gives us the freedom to develop and test new and innovative approaches, and embed reconciliation in the organisation.

Paul said that while the organisation has made inroads to reconciliation through the first plan, it still has a long way to go.

“As we implemented the first plan, we were challenged by the need to listen more deeply to Aboriginal and Torres Strait Islander people and better understand that we must change how we do things if we are to achieve our goals.

“To address these challenges, our Innovate Reconciliation Action Plan has an even stronger focus on building respectful relationships. It explores how we include Aboriginal and Torres Strait Islander peoples’ views and voices across all levels of our organisation and services.

“As we implement our second Reconciliation Action Plan, our commitment to reconciliation has not faded, and our determination remains strong,” he said. ■



# Response to the displaced

There is no greater force of nature that evokes more intrigue, fear and wonder than that of an exploding volcano. There is something primitive and humbling when we see we are at the mercy of our planet when smoke, ash and lava spew from its crater.

Residents on the island of Ambae in Northern Vanuatu were at the mercy of Manaro Voui volcano recently, forced to flee their homes when the threat level was raised to a level 4 (out of 5) on the geo-hazard scale. The volcano is one of the most dangerously active volcanos in the world, with a complex caldera covered by a large lake. Large clouds of ash and acid rain were falling on surrounding villages and gardens.

The islands' 11,500 inhabitants were forced to flee following a State of Emergency declaration with approximately 8,000 arriving on Santo to seek refuge. It was like a Dunkirk evacuation with every available boat and ship travelling to Ambae to collect evacuees.

As the evacuees arrived, Churches of Christ Medical Santo was invited by the Vanuatu Ministry of Health to be a part of the medical service response team.

Executive Manager Lyn Cox said the service was ready to help.

"Medical Santo was tasked to assess and triage any evacuees with health issues who arrived on Santo by ship. Those needing urgent treatment were sent to the Northern Provincial Hospital and Medical Santo treated less serious evacuees at the clinic to support the heavy workload on the hospital."

Churches of Christ is the foremost church on the island of Ambae, with all 33 congregations on the island affected by the eruption.

The Vunamele Church of Christ in Santo which is next door to the Churches of Christ Conference Headquarters in Vanuatu was the primary processing location for all Ambae arrivals on Santo. They provided initial meal and registration and directed people to emergency



“The challenge for the government and local groups was to provide ongoing accommodation, food, clean water and sanitation to support thousands of displaced people”

accommodation.

Acting General Manager Business Growth Mike Folland, lived and served in Vanuatu at the Churches of Christ Bible College at Banmatmat for a number of years and was in the country on holiday with his family when the disaster was unfolding. Mike spent some time supporting those at the reception and processing centre over the weekend of 1-2 October.

"It was encouraging and humbling to see the response of Vanuatu Churches of Christ congregations and the team at Medical Santo, helping receive and process the significant numbers of internally displaced people from Ambae," Mike said.

"But the challenge for the government and local groups was to provide ongoing accommodation, food, clean water and sanitation to support thousands of displaced people. Our prayers were with all those affected and those who are



Above, Medical Santo provided free health screening and treatment at the evacuee camps on the island.

responding and we were thankful that our churches and Medical Santo are able to serve their communities in a time like this."

As the government of Vanuatu extended the state of emergency on Ambae, in partnership with the local hospital, Medical Santo continued to provide vital health screening, treatment and referral to around 8,000 people in over 50 evacuation camps on a daily basis. In addition to this Medical Santo offered free treatment and medication to all Ambae evacuees who presented for care at the Clinic. Subsequently, the daily number of number treated by Medical Santo more than doubled during this time.

The volcano somewhat settled, and the displaced residents began to return home in late October. They will be faced with significant challenges in restoring clean water and replanting crops that have been contaminated or destroyed by the acid rain and volcanic ash. We pray for the many local and international organisations – including Churches of Christ Global Mission Partners – who will continue to work to help the Vanuatu Government and the people of Ambae to recover.

Medical Santo continues to treat any Ambae evacuees who remain in Santo free of charge. The centre is concerned for the ongoing health and wellbeing of those who have been repatriated and will continue to assist in the coming months to help change lives in Northern Vanuatu. ■



## Service manager required

If you would like a position where everything you do will make a difference in the lives of a local community then this may be the role for you.

### About the role

You will be managing the clinic, emergency medical services and health outreach of Medical Santo in Vanuatu. Medical Santo is a registered charity operating as a not-for-profit medical aid organisation providing health services to the local Vanuatu community, expatriate locals and tourists. You will be working with and locals and within their culture. In this role you will be responsible for:

- Day-to-day operations of the service, including the clinical operations, budgeting, purchasing medication management, compliance and quality processes
- Creating rolling 18 month forward plans for specialist clinics, rural outreach) visits, and staff/volunteer resourcing
- Recruiting, developing and managing skilled and qualified staff

### About you

You will need to be a registered nurse, paramedic or equivalent, with remote area or foreign aid experience. Your substantial experience in leading teams and managing a clinical environment in primary care is backed by your ability to solve health, medical and logistical challenges in an environment of limited resources and operational change. You are recognised for your ability to interact at a high level with key external stakeholders. Your high level of cross cultural competency helps you build relationships throughout the community. Your active faith exemplifies a Christian lifestyle, where you live and work in accordance with your Christian values and are happy to engage with the local church community. Of course, you are also able to work within the mission and values of Churches of Christ in Queensland and Medical Santo. If you have a right combination of clinical and managerial experience and are looking to work in a new culture, we would love to talk with you.

### More information

The role is based in Luganville, Vanuatu and reports to the Executive Manager of Medical Santo. Find out more about Medical Santo and Churches of Christ in Queensland and obtain a copy of the position description and selection criteria at: [medicalsanto.com.au](http://medicalsanto.com.au)

For more information contact Lyn Cox on +61 407 723 685 or email [info@medicalsanto.com](mailto:info@medicalsanto.com)



# Journey with us

Our well-told mission is to bring the light of Christ into communities. Each year, we are positively impacting tens of thousands of lives through our Kingdom Access Places, catalysing real transformation and uplift in people's lives.

Over the past few years, we have shared with you in the pages of Networking the growth of unique and innovative programs and ministries such as Medical Santo in Vanuatu, CYCLE – Believe and Achieve (Child, Youth Centre for Learning and Employment), Mission Action Partners and Community Chaplains, and the amazing work they do in bringing hope, support, care and expertise to individuals and communities. These roles and programs have been developed in response

to specific needs and are a significant part of how we outwork our mission in communities in partnership with our churches and services.

What many don't realise is that none of these programs receive government funding and they are only made possible by donations, partnerships and income from other Churches of Christ in Queensland activities. This means that their long term sustainability and expansion is dependent on cultivating external funding sources such as individuals, businesses, foundations, government grants and other innovative forms of investment and social impact funding.

Acting General Manager, Business Growth Mike Folland said that as an organisation, we are committed to finding

the funding for these vital roles and programs. We do this through inviting people and organisations to partner with us in our mission by investing their time, money, expertise, and goods and services.

"In our Strategic Plan 2015-18, the fourth strategic priority is funding our mission and growth, which includes increasing individual supporters and generating new sources of philanthropic, social investment and grant funding," Mike said.

"A key component of this is getting people to come on the journey with us, not just encouraging donations out of the

**There are a number of ways you can invest with us to bring the light of Christ into communities and transform the lives of individuals.**

- Go to [cofc.com.au/give](http://cofc.com.au/give) for more information, call 1800 600 900 or email [fundraising@cofcqld.com.au](mailto:fundraising@cofcqld.com.au).
- Leave a lasting gift – bequest
- Make a one-off donation
- Become a regular donor
- Donate a gift-in-kind
- Memorial gift
- Partner with us
- Fundraise for us

#### Volunteer:

Go to [imaginevolunteering.com.au](http://imaginevolunteering.com.au) to find opportunities near you.

'goodness of their heart' but out of desire to partner with us to see real change and transformation in vulnerable people and communities."

"We want people to understand that they are making an investment in helping real people, families and communities, and making a real contribution to changing lives, not just donating to pay someone's salary or to provide a service or run a program."

Philanthropic grants and funding also help to fund some of the costs to deliver these vital programs and our services. In 2016-17 we assisted our services and churches in identifying, preparing and lodging tenders and funding submissions. Of the over \$40 million sought in the last financial year, we were successful in gaining in excess of \$13.1 million in funding.

According to McCrindle Research (2015), four in five Australians give financially to charities. Many of these also support in other ways, with 63 per cent donating goods, 33 per cent volunteering, 18 percent fundraising and promoting and 15 per cent raising awareness of an issue. And the majority (69%) of givers support a single charity or cause. But it is a challenge reaching this 80 per cent of altruistic Australian's with over 54,000 registered charities in Australia, sharing in \$6.8 billion of annual charity income.

"In light of this, we have reviewed the way we approach funding our mission, and are placing a strategic focus on inviting and enabling people to engage more in our mission,"

Mike said. ■

Together, as churches, mission and care services, we invest in unique and innovative programs and ministries that bring uplift and transformation to the lives of individuals and communities. We invite you to partner with us through making a regular or once of gift.

**Listen. Comfort. Empower.**  
Give the gift of a Community Chaplain.

**Bring sustainable health solutions to Northern Vanuatu.**  
Support Medical Santo deliver vital health care.

**Help a young person in care re-engage in education.**  
Support CYCLE - Believe and Achieve program. (Child, Youth Centre for Learning and Employment).

Every contribution makes a difference and helps ensure the long-term sustainability and expansion of these vital ministries and programs. These initiatives do not receive government funding and are only made possible by donations, partnerships and income from other Churches of Christ in Queensland activities.

To find our more, visit [cofc.com.au/mission-enterprises](http://cofc.com.au/mission-enterprises).

**Give today: 1800 600 900**  
[cofc.com.au/give](http://cofc.com.au/give)



I would like to support:  Community Chaplains  Medical Santo  CYCLE

Title \_\_\_\_\_

Full name \_\_\_\_\_

Address \_\_\_\_\_

Address \_\_\_\_\_

Postcode \_\_\_\_\_

Phone \_\_\_\_\_

Email \_\_\_\_\_

I want to be a regular giver.  
Please charge my Credit Card  
\$ \_\_\_\_\_ each month until further notice.

Or  
My gift today is  
 \$100  \$50  \$30  
 Other Amount \$ \_\_\_\_\_

Please debit my  Visa  MasterCard  AMEX  
\_\_\_\_\_/\_\_\_\_\_/\_\_\_\_\_/\_\_\_\_\_  
Exp Date \_\_\_\_/\_\_\_\_ CVV \_\_\_\_\_  
Name on card: \_\_\_\_\_  
Signature: \_\_\_\_\_

- Cheque/Money Order is enclosed payable to Churches of Christ Care
- I have included Churches of Christ in Queensland in my Will
- I would consider including Churches of Christ in Queensland in my Will

Churches of Christ in Queensland values your privacy and will only send you information regarding news, events and special appeals that are conducted by Churches of Christ in Queensland. We will never pass your information to a third party. For our full Privacy Policy please go to [cofcqld.com.au](http://cofcqld.com.au).

For further information please phone **1800 600 900**



# Mission in action in our communities



**M**ission Action Partners. Their role can be summarised in their title. They are our members of staff who are tasked with putting our mission into action in our communities. Part of our Strategic Action Leadership Teams, our Mission Action Partners are responsible for implementing our Mission Action Strategies that are formed out of these groups.

As with our Strategic Action Leadership Teams, our Mission Action Partners can work across either a region or a theme, which is not bound by geographic location. Group Manager Strategic Mission Development Tim McMenamin said that the Mission Action Partners are great collaborators in the life of our churches and our care services.

“One of the themes of our 2011-2016 Strategic Plan was the need to bring our churches and care services back together. Over many years prior, these two groups had drifted apart and were operating in silos with little sense of our joint core mission. We needed to bring these two areas back together,” Tim said.

“We created the Strategic Action Leadership Teams (SALT), which is part of our clustering strategy, to bring together leaders from across our movement in an area to work together and ‘bring the light of Christ into their community’. But it became apparent that for the strategy to be successful, we needed dedicated staff to coordinate the relationships and rhythms of the SALT and also to prosecute the particular action of the Mission Action Strategy—so we employed some Mission Action Partners.”

Today, Mission Action Partners exist to unify our churches, care services and the wider community around our mission. They are there to bring into effect the Mission Action Strategies developed by the Strategic Action Leadership Teams, and to identify, equip and release the latent missional potential in our churches and care services.

“The role of the Mission Action Partner has proven to be intrinsic part of the missional movement of Churches of Christ in Queensland. By harnessing and releasing this potential within our congregations, new expressions of faith have developed within our communities.

“As agitators for mission, Mission Action Partners are entrepreneurial

in nature and practice. It is their role to identify places of darkness in their region—through local knowledge or community assessment—and strategically develop Christ-like responses.”

There are Mission Action Partners currently active right across Queensland, achieving great things for their communities, and here is just a snippet of what some of them have been up to.

In Hervey Bay the Fraser Coast Mission Action Partner facilitates both a job club and budgeting club through the local church. Through this, people have found employment and become more financially literate. The group gathers at the church property, where they share a meal and enjoy some fun and provide each other with support and care, which also meets the needs of some socially isolated people in the community.

In Brisbane, Mission Action Partner Janette Phelan is part of the Premier’s Domestic Violence Taskforce, and a representative of the Combined Churches DV Response group. As a psychologist and trauma specialist, she is helping to shape long-term, effective responses to the issue of domestic violence in our community, and is doing so as a church representative.

Nick Burns has been a Mission Action Partner for three years, having spent two years in North Queensland—with a focus on the region including Cardwell to Mackay and Townsville to Mount Isa—and since the beginning of 2017 he has been working in the Sunshine Coast, Cooloola and Moreton Bay regions.

Nick’s most powerful achievement was the simple act of forging a relationship with Uncle Alfred Smallwood and his work with the Men’s Group.

“This relationship has led me on a journey of learning and to a deeper understanding of our Aboriginal and Torres Strait Islander uncles and aunties and brothers and sisters. It was a privilege recently to receive from Uncle Alfred Smallwood and Uncle Russel Butler the Aboriginal name Manara Bana. The simplicity of this relationship often brings a great depth of understanding and connection,” Nick said.

“The life of a Mission Action Partner is very dynamic, it entails thinking

strategically across various communities, understanding the subtle promptings of God in various places, trying to bring and build momentum in certain project areas and always considering our mission.”

In August 2017, Craig took up the challenge to be Mission Action Partner in the Southern Downs region, an area where we are experiencing tremendous growth thanks to our developments.

“I will be working closely with all key stakeholders to discover what it means for us as a community of collaboration to ‘bring the light of Christ into communities’,” Craig said.

“Jesus said a lot of things, but two stand out for me in my role as a Mission Action Partner: ‘He came to help, to put the world right again’, and secondly, ‘(He) came so (we) can have real eternal life, more and better life than (we) ever dreamed of’. This is what excites me as Mission Action Partner, that I am employed to actively partner with colleagues and other persons of peace to help ‘set the world right’ and ‘bring life’ to kids and families through the provision of loving networks, support and housing, and care for elders in our communities.

“I am thankful that I get to wake every morning and get to spend time with other people that give a damn about making a difference in our communities.”

As Mission Action Partner on the Gold Coast, Bruce Murray established The Mooring with Southport Church of Christ (which you can read more about on page 23).

He is also currently working with a team to assist in achieving a coordinated approach with interested parties and churches regarding the issues around prostitution and child trafficking, with an aim to provide an effective social justice legacy that will point people to Christ, during and beyond the Commonwealth Games on the Gold Coast in April 2018. Donna Savill is the Mission Action Partner for women. She has worked with Learning and Development staff to provide the Shine Program to ladies within our services. This course brings social connection and uplift to ladies, and affirms their beauty and value as women. ■



■ Women from across the Darling Downs came together for the three-day Darling Downs Churches of Christ Women's Retreat.

## Darling Downs Churches of Christ Women's Retreat

**W**omen from our churches across the Darling Downs came to be refreshed and encouraged at the Darling Downs Churches of Christ Women's Retreat. Over the three-day event, attendees embraced the 'Rainbow' theme, reminding them of God's promises.

Guest speaker Rosemarie Green from Brisbane gave three very challenging messages based on God's promises. Rosemarie was a captivating speaker and took us for a journey through God's promise made to Noah never to flood the earth again and into His promise of a Saviour, the Lord Jesus Christ. The content of the talks were such that many present were keen to have Rosemarie back again in the future.

Wendy Seymour presented songs during the worship times that focused our thoughts towards what Rosemarie shared and together they provided much needed refreshment and spiritual encouragement.

The venue at Highfields, with its spectacular views of the surrounding trees and bushland, stimulates the mind to focus on God's wonderful creation and that we should be aware of His desire to offer us such beauty to be freely enjoyed.

Irene Watkin led Friday night's craft activity as we created homemade



cards. It was thoroughly enjoyable and, while most followed the directions, we did have a couple of free spirits who created cards with their own design.

Jenny Sutton once again led us in the communion service in the outdoor chapel. Her message, simply and beautifully presented, was a fantastic way to begin our Sunday morning together.

The rainbow theme was a brilliant success, reminding us of God's promise, and it was surprising to see how many items that reflected the rainbow had been sourced by the organising team; from the rainbow umbrella shading a cute little bear that greeted everyone on their arrival to the rainbow cards, the rainbow themed banner that was beautifully painted by Joan Scutt-Warren, right through to the jellybeans in the gift bags. Even dessert

on Saturday night was a rainbow cake.

Free-time on Saturday afternoon allowed some of the ladies to visit nearby coffee shops, however most were happy to spend time in fellowship with each other at the spectacular venue with its captivating views of the surrounding bushland.

Brendan Walmsley performed at the concert on Saturday evening. He sang a selection of songs he had penned himself as well as many old-time Christian melodies, which resonated so well with the audience. It was a thoroughly enjoyable evening and Brendan proved to be a wonderful guest as many were able to grab a photo as he posed with the ladies for their moment in the limelight with a well-known performer.

Planning is well underway for our 2018 retreat, which will see a variety of changes including a new name—'Darling Downs Autumn Retreat'—and a new venue at the James Byrne Centre in Highfields, which is well suited to any ladies with mobility issues. Amidst these changes much will remain the same with a fantastic speaker, worship and prayer times together with similar spectacular views of the surrounding bushland. Women and girls aged 18 and over can still be assured that the retreat will nurture, encourage and bless those who join us on 2-4 March 2018. ■

Safe harbour from  
rough seas at

# the Mooring



“Truly I tell you  
whatever you did for  
the least of these  
brothers of mine, you  
did for me”

Mt 25:40

Imagine getting the phone call that your loved one has been rushed to hospital in a serious condition. You are hundreds of kilometres away, but must rush to be by their side. They could be in hospital for days, weeks, months...

This is surely one of the most traumatic and stressful experiences to go through. Let alone needing to find somewhere to stay when you arrive to be by your loved one's side.

Southport Church of Christ and Mission Action Partner Bruce Murray established 'The Mooring' three years ago to provide accommodation and practical support for families from out of town with loved ones in intensive care at the Gold Coast University Hospital or Robina Public Hospital.

Bruce was delivering Christmas hampers to the hospital and in the process heard stories about people who had trouble with finding affordable accommodation, with some even sleeping in their cars and in local parks while their loved ones were in the hospital.

"To me, this was unacceptable," Bruce said. "The Mooring is privileged to be able to come alongside families at such a difficult time. We see this as an urgent need and respond as a committed team to be the hands and feet of Jesus. (Mt 25:40 'Truly I tell you whatever you did for the least of these brothers of mine, you did for me')."

Most the people who come through The Mooring ministry are either from interstate or overseas, sometimes speaking little English, but in most instances faced with the issues of the

survival of their loved one.

"We imagine for families it's like they find themselves floating in a life raft during a storm, desperately needing to find somewhere to tie up safely. The Mooring gently steps in to help create a safe harbour by supplying the basics, as no one has prepared for this unplanned life event."

Since February 2015, the ministry has grown from four members from Southport Church of Christ to a team of 23, including an app designer, a person who applies for grants, a team leader and volunteers, cooks, gardeners, cleaners and more, and has assisted over 200 families since its inception.

The ministry has built strong relationships with Social Workers from across the hospital, who refer families in need to The Mooring.

The Mooring initially provides accommodation, a care pack, home cooked meal and transport as required. They then link the family up with a Family Support Volunteer, who is available over text message or phone call to offer continued practical support, as well as delivering ongoing meals and other needs as required.

"During times of trauma, people feel like a rug has been pulled from under their feet. Families are very grateful for the support, particularly when finances are stretched or non-existent, as this enables them to concentrate totally on their loved ones without having to consider the additional pressures of where to live, the basic necessities such as meals and getting to and from the hospital."

The Social Workers at the hospital have indicated that the kind of practical care the Mooring offers for families often has a flow-on effect on the patient's emotional state and, in a number of cases, can aid in the recovery process.

The Mooring is supported by donations of food and items for the care packs. Family Support Volunteers are sourced from Southport Church of Christ, and have a strong commitment to the mission of The Mooring. Volunteers are often sought as cooks, cleaners, housekeeping, maintenance, and so on.

Bruce said it has been a privilege to see God's hand in opening up avenues for The Mooring.

"I have been blessed watching this ministry grow as God continues to open up further doors into other areas of the hospital." ■

# Love in action

For those in our communities who are doing it tough, access to food, clean clothing and shelter is important. However, too often, this is the extent of our assistance. As we have all experienced in our hardest moments, the knowledge that somebody cares for us can be that crucial factor that helps us regain our spirits. We all want to feel valued, we all need purpose, and this is what Moreton Bay Community Matters is all about.



■ Left Dot and Pastor Skipper. Main photo, Pastor Skipper with volunteers at the community garden. The garden is open to everyone. All the seedlings were donated by local businesses, Theo's Garden Centre and Greenstock Nurseries. The volunteers would also like to thank and mention Russell Young Garden Designs, Alan Hatch and Bunnings North Lakes.

Every Thursday morning at Rivers Church of Christ, Kallangur, baskets of fresh food await visitors from near and far. The baskets are prepared by volunteers the day before and are all gone within half an hour of the 10am collection time. Yet, the happy chatter of locals and volunteers continues on for much longer because most of those who come to collect a basket do not come just for the food.

As Pastor Luke Skipper of Rivers Church of Christ explains, the aim of Moreton Bay Community Matters "is to provide holistic care to the community".

"Often when people show care for the community they see the obvious physical needs [and] the social, emotional, psychological and spiritual needs go unmet.

"So we aim to provide a place of belonging, acceptance and value."

Moreton Bay Community Matters began in April 2017 as a coffee meet-up for locals who felt socially isolated. From six volunteers to more than 30, from 40 food baskets donated each Thursday to a record 110, with bi-monthly Meal and Movie nights and a three hundred square metre community garden, the strength and impacts of this not-for-profit community group are being realised across Brisbane.

"We are starting to get referrals from organisations that, historically, churches would refer people to, like the Salvation Army, Encircle and the RSL Advocates," Pastor Skipper said.

"We've even had referrals from hospitals, the police and the local State MP. All of them looking to refer those people and families to a community that really cares.

"We are also looking to partner with other local churches so we can pull more resources together, [and] to be

community ministry in the area that all churches are welcome and encouraged to be involved with. Particularly churches that currently do not have community ministry of their own."

For Dot, who recently moved to Australia from South Africa, Moreton Bay Community Matters is a movement, underpinned and driven by unconditional love.

"You come here and are accepted, no questions asked," she said.

Dot arrived in Brisbane with her husband and their transition to a new life in a new country became demoralising as they both struggled to find work. As feelings of loneliness and hopelessness overcame her, Dot searched for purpose.

"We worship at the Uniting Church, but I heard about what was going on [at Rivers] and I thought, I could volunteer and be part of that."

With skills in hospitality, Dot is now in charge of organising the morning tea that runs alongside the Rivers Church of Christ food and clothing bank.

Dot said the number of people who come to use the bank and collect food hampers on Thursday mornings "has

grown, and we need to get here earlier and earlier".

The morning tea set-up, which was once just a few tables and chairs, now sprawls in café-style through the doors of the community hall and out onto the grass.

It is in this café setting that volunteers and Pastor Skipper can get to know the people who come to use the food and clothing bank.

"It's here that people can easily access me if they wish to talk to a pastor or where their details can be taken by our volunteers for me to follow people up," said Pastor Skipper.

"Likewise, our bi-monthly Meal and Movie nights are held with the intent for people to feel social inclusion and to provide information about other community service providers in the local area that people can access.

"And our community garden has also been developed with the intent of providing a place where people can regain a sense of purpose and dignity by doing something constructive and positive with their time."

It is this genuine care – this love in action – that sets Moreton Bay Community Matters apart and draws people in, no matter their religious beliefs.

As Dot has observed, "people come here and they feel love and compassion, and they are drawn to Christ that way".

"We're breaking down barriers and it's incredible." ■

*For more information about Moreton Bay Community Matters, contact Pastor Skipper at [luke.skipper@riverschurch.com](mailto:luke.skipper@riverschurch.com), visit [facebook.com/mbcmatters](https://www.facebook.com/mbcmatters) or drop into Rivers Church of Christ at 120 Ann Street, Kallangur.*

“We’ve even had referrals from hospitals, the police and the local State MP. All of them looking to refer those people and families to a community that really cares”

# Ipswich locals

## find power in numbers

It was not until Terry Bentick, Ipswich resident of Churches of Christ Housing Services, made a journey to Brisbane on 30 August that he “developed a full understanding of what the Queensland Community Alliance was all about”.

He is now part of the 1.6 million person-strong conglomerate of Queensland’s biggest faith, community, ethnic and union organisations.

Terry feels that now, more than ever, he has a voice and can make a real difference.

The Queensland Community Alliance (QCA) was more than 18 months in the making when it was officially founded in Brisbane’s City Hall in August this year.

Housing Chaplain Team Leader Murray Thomson said more than

1,400 people attended the founding assembly.

“There were 20 of us from the Ipswich Churches of Christ group. We took the train to Roma Street Parkland and had a barbeque there, then we walked to the city to join the meeting,” Murray said.

“There was great spirit, a great sense of unity and purpose. The QCA is about society getting organised, coming together and having influence over the decision makers to give more people a voice.

“We’ve done some pavement talks locally, asking questions like ‘what keeps you awake at night’ and feeding that back into the Community Alliance process.

“[In Ipswich] in particular, with

the delivery of the National Disability Insurance Scheme, there have been concerns that quality of service may decline.

“There will be so many jobs created by the Disability Insurance Scheme and we want to make sure those jobs are filled by people who are properly trained.

“So we’ve asked the Premier to help us lobby the Federal Government to make sure people on the Disability Insurance Scheme get the best service,” he said.

Churches of Christ Housing Services resident Debi Hogarth said the opportunity to be part of something so big had changed her life.

“On your own, it’s like who do you talk to? But in a group, if you have a concern and you realise someone else has that same concern, then you work together and eventually make a difference. It’s about power in numbers,” Debi said.

Following the QCA’s official founding, the Ipswich team will concentrate on helping localise two campaigns.

The first, for quality care for people with mental illness, a disability or requiring aged care, in response to the shift to consumer directed care.

The second, to fix a broken training system, and work to end exploitative employment of vulnerable workers like seasonal farm workers and contract cleaners. ■

**For more information about the Queensland Community Alliance visit [qldcommunityalliance.org](http://qldcommunityalliance.org), or for information regarding the Ipswich Churches of Christ group, email Murray at [murray.thomson@cofcqld.com.au](mailto:murray.thomson@cofcqld.com.au).**



## Heart & soul recognised

Churches of Christ Care Family Day Care services is proud to have a cohort of dedicated, trusted and highly professional educators who care for children in their communities.

Kristy Howell is a family day care educator in the Wide Bay area, and in 2017 she won the Excellence in Family Day Care Award, which recognises the incredible contribution that family day care educators make to the early childhood community.

“It is incredible to be recognised for something I am so passionate about,” Kristy said.

“I put my heart and soul into what I do and I believe family day care plays a wonderful and vital role in our communities and in early childhood education. To be a winner amongst so many other inspiring educators is such an honour.”

Kristy has been an early childhood educator for over 10 years, and has been with the organisation for that time.

“Churches of Christ Care has such a high standard of values and

professionalism, and I feel confident knowing I am with an organisation that continues to put the welfare and development of children first.”

Following the arrival of her own children, her strong interest in early childhood education was re-ignited.

“I truly wanted to play a part in helping children learn, grow and develop in their early years. I began study in high school, and have continued through to now and am still learning every day.

“There are so many rewarding moments in this role. Being in such a unique position, it allows me to create a really tight-knit community with families

in my care. When I get to spend the day learning beside the children and watching their journey, it is an incredible feeling and to know I play a huge part in that is really satisfying.”

Churches of Christ Care is currently looking for early childhood educators just like Kristy to join our team. If you are a passionate and caring person and are interested in building your business at home, contact 07 3327 1600 and talk with a family day care coordinator today.

“If you can bring passion and willingness to learn alongside the children to this job, you will succeed. It’s not always easy, but it is always rewarding,” Kristy said. ■

**We are one of the leading not-for-profit providers of high quality, approved child care services in Queensland, operating a range services for children aged 0-16 years. Our early childhood services focus on community needs and include centre-based, home-based and community-based care. For more information go to [cofc.com.au/earlychildhood](http://cofc.com.au/earlychildhood).**



■ Above, from left, Churches of Christ Housing Services’ residents Anne Tregelles-Fox, Terry Bentick and Debi Hogarth, Community Chaplain Lynne Feldon, Ipswich resident Pam Hayes and Housing Chaplain Team Leader Murray Thomson.



# Cairns Street Chaplains host national conference

Over 9-12 October our Cairns Street Chaplains hosted the third annual National Street Chaplains Conference at the Cairns Colonial Club Resort.

The conference brought together 36 delegates from across Australia, from as far south as Launceston, and as far west as Perth, and from Cairns, Townsville, Airlie Beach, Mackay, Toowoomba and Brisbane.

The conference allowed delegates to get more familiar with similar services around the country, engage with one another and benefit from sharing skills, knowledge and resources.

General Manager Mission Enterprise Ross Dinnar said that the conference was an opportunity to work with other organisations from across Queensland to evaluate and share ideas about how the Safe Night Precinct funding is being administered, looking at innovation and ways in which service providers can work together

“Queensland service providers are just over a year into providing the



Government-funded services, so the timing of the conference couldn't be better to discuss how they are going,” Ross said.

The conference was specifically for services who deliver the Assertive Outreach and Rest and Recovery funded services in Australia.

“It was good to get these service providers together to talk about how the provision of these services is going to date, to brainstorm how services could be improved or provided differently, and to share insights and resources. It was a great opportunity.”

Attendees heard from motivational speaker and Red Frogs Australia Founder Andy Gourley, who opened the conference. Each service provider also had the opportunity to present to their peers, detailing how their service operates and highlight successes and challenges.

“Through this we learnt that recruitment was identified as a significant challenge for many service providers.”

They also received training from a qualified counsellor on effective methods for communicating on the streets, and there was facilitated conversations on topics including recruitment, policies and procedures and more.

Churches of Christ in Queensland and Cairns Street Chaplains received funding to deliver services in the Queensland Government's 'Safe Night Precinct' in the Cairns CBD, which was brought about in response to the new lockout laws introduced on 1 July 2016.

Cairns Street Chaplains provide on-the-ground support to revellers. Churches of Christ in Queensland administers the funding and employs a coordinator to run the service. We also helped procure an old ambulance from Queensland Ambulance Service to support the service.

Street Chaplains are there to enhance safety and support for alcohol or drug-affected patrons and others at risk. They compassionately attend to people, evaluating their medical condition and administering basic first aid, including calling an ambulance if required. ■

**More information on Cairns Street Chaplains can be found at [www.cairnsstreetchaplains.org.au](http://www.cairnsstreetchaplains.org.au)**

## Harnessing the 'new' old

Wednesday  
7-9 March  
2018

# Now is the time

A not to be missed conference if you are involved in 45+ Ministry (Senior/Older Adult) or are a Theological/Ministry Student, a Denomination or Ministry Head or Church Minister or Leader.

This 'game changing' conference comes out of the Better Together team, which is made up of representatives from all major denominations and para-church organisations.

Your church will view older members in a new light after hearing from Amy Hansen, Graham Agnew and other specialist practitioners in the field of older adult ministries.

The conference aims to challenge the ageist culture within church settings and ministries to teach and train folk to see the untapped potential and possibilities of the 45+ cohort and to inspire our churches and centres to partner with God to use the skills, wisdom, knowledge and availabilities of this group in church life.

Amy Hansen, Ph.D., leads a speaking, writing and consulting ministry that equips the church for ministry with the, new old. She is the author of the book 'Baby Boomers and Beyond: Tapping the ministry talents and passions of adults over 50', and she regularly teaches gerontology courses to college students. Amy lives with

her family in Council Bluffs, Iowa. Graham Agnew is a 40-year veteran with Churches of Christ in Australia. As Senior Minister at the Marion Church of Christ in Mitchell Park, South Australia, he saw the congregation become one of the largest Churches of Christ's in the country.

For 25 years, Graham has served as an instructor conducting classes for business people in leadership, communication, personal development and human relations. For about seven years, Graham has produced daily radio spots for Christian stations.

There will also be seven workshops to choose from, with attendees taking part in two of these workshops over the two days.

- The Ageing John and Paul (Theology of ageing in Christ) with Lyn Moresi
- What and how to run Alpha Plus with Philippa Fielding
- The Ageing Poor with The Salvation Army Social Programme Department and Panel of Church Practitioners
- The Intergenerational Church with Graham Agnew
- Chaplaincy with Jon Hanson
- Finding Your Fit Flying Solo with Richard Pearce from Fresh Horizons Ministry
- Pushing Back Against Ageism with Paul Arnott from CMA/Q4

**Where:** CityLife Church,  
1248 High Street Road, Wantirna South, Victoria

**Full conference:** \$195 (from 1 December)  
includes meals (students \$100)

**Leaders morning only:** \$45 (students \$10)

**Conference dinner only:** \$35 (students \$25)



■ Edna is enjoying getting out an about thanks to the support of Churches of Christ Care Community Care Hervey Bay.

## Edna's Excellent Adventure

**W**hat began as a gentle swing in a park has led to Edna's Excellent Adventures, with weekly outings as part of her Home Care Package.

Edna, 94, commenced a Home Care Package with Churches of Christ's Care Community Care Hervey Bay service in May 2017.

Service Manager Karen Lee said that Edna had recently lost her husband and had become quite withdrawn, choosing to stay in her room most of the time.

"We looked at Edna's five essential needs from our Positive Wellbeing Model of Care, taking into consideration her comfort, inclusion, occupation, identity and attachment. Through this we learnt a lot about Edna and her life," Ms Lee said.

Edna's family determined that if a community care worker was able to take her out once a week, they could attend to the groceries and other chores. In-home respite was planned with a focus to simply get Edna to come out of her room and enjoy a meal.

"After a short time, Edna asked her carer to take her outdoors ... that is when things started to change, and Edna's Excellent Adventures began," she said.

"These days it's hard to find Edna at home. Her weekly outings have included a visit to Snakes Down Under

in Childers, where she got up close and personal with blue tongue lizards, turtles, crocodiles and snakes; followed by a Childers famous Mamino ice cream.

in Childers, where she got up close and personal with blue tongue lizards, turtles, crocodiles and snakes; followed by a Childers famous Mamino ice cream.

"She has also enjoyed a day out cruising Hervey Bay on a motor Trike from My Trike, and fish and chips by the water."

Each Thursday, Edna enjoys a four hour adventure to a new destination. With each adventure Edna becomes happier and livelier. Just a few months

after that first swing in the park, there have been noticeable changes.

"She is much happier living with her daughter and comes out of her room more often, openly engaging in conversation and talking about her adventures. Her memory has improved, she has regained a sense of purpose, and looks forward to her outings. Her family say that she has been to more places than them, and it is making them realise they need to do the same."

Ms Lee also said that through the outings, Edna's healthy appetite has returned and she has gained weight, and her mobility has improved, so much so that she doesn't need any walking aides, other than the support of her care worker.

"She pops in to see the office staff, and likes to put faces to names. She is much more engaged in conversations with the staff and her family, and is happy to go with any care worker to enjoy her new lease on life." ■

*If you or someone you know could benefit from help around the home or getting out and about, a Home Care Package can make an incredible difference. To learn more about the services we offer, visit [www.cofc.com.au/seniorslifestyles](http://www.cofc.com.au/seniorslifestyles) or call us today 1800 772 011.*

## Fitness at any age

**T**hree residents from Churches of Christ Care Moonah Park Aged Care Service at Mitchelton have put us to shame but racking up over 330 gym session between them since their gym opened in April to September.

Their stellar achievement was acknowledged at an event at the service recently.

Margaret Taylor, Hazel Stevens, and Alex Suto are redefining what it means to be 'gym junkies' and proving that age and physical ability are no barrier to 'pumping iron' and enjoying exercise.

The three seniors use the specialised exercise equipment at the Mitchelton aged care service, which has been specifically designed for older people, with added padding and the ability to increase weight and resistance in much smaller increments.

For Margaret Taylor, 77, going to the gym is more than just about increasing her fitness.

"The thing I like best about going to the gym is the social aspect. I get to speak with people I never would have spoken to before. I get to see people from different areas of the service and socialise," Margaret said.

But, she is also seeing the physical benefits of regular exercise.

"I feel much better, the gym is also good because I get to do other exercises. At the moment, because I have a leg injury, I have can choose other exercises. I like yoga, Tai Chi and dancing as well. There is an exercise called 'kick and flick' and that is a social exercise," she said.

Using current state-of-the-art exercise equipment, Margaret Taylor is excited to see what the future has in store.

"I have heard about new [exercise] equipment being invented in the next 25 years, I'm going to wait for that," she said.

Of course, the reason many of us go to the gym is to lose weight. Hazel Stevens, 85, has been enjoying the results she is seeing from her regular gym sessions.

"I feel great after the gym. The dress I am wearing today, I haven't worn this dress in 17 years! This is the first time," Hazel said.

"When I started at the gym, I was overweight. I started at the gym and lost weight...after joining the gym I feel marvellous. The interaction with different people is lovely."

In just six months, Alex Suto, 76, has lifted, pushed and pulled a total of 253,589 kg on the equipment, averaging 2,131kg each session.

In consultation with a physiotherapist, users—such as Margaret, Hazel and Alex—are issued a swipe card with their personalised exercise program. That card then slots into any machine, automatically setting the weight and number of repetitions they can safely lift. It also keeps a record of their regime and progress meaning an accurate review of results. Each individual program takes about 20 minutes to complete, which has shown to be enough time to have significant benefits for users.

The innovative exercise program has been implemented by Allied Health Team Leader Craig Wilson across three Churches of Christ Care aged care services.

"Since the gyms started at our Alexandra Hills service 12 to 18 months ago, there has been a fitness explosion across our services. There are three new gyms we have opened, with 11 physiotherapists working with our residents," Craig said.

Churches of Christ Care intends to extend the innovative gym program, based on the Helsinki University Research exercise program, to other services. With 25 years of scientific research, the exercise program and equipment is recognised as a safe way for older people to exercise and improve strength and functional ability.

Director of Seniors and Supported Living Bryan Mason said that thanks to a generous donation of \$60,000, four new pieces of equipment will be purchased for the Moonah Park Aged Care Service gym.

"The program aligns with Positive Wellbeing Model of Care, which promotes meaningful aging. Research has shown that exercise can help prevent falls while also improving pain, functional ability and balance, and can enhance emotional and physical wellbeing," Bryan said. ■



■ Above, Miss Olympia World Pro Champion, Teneka Hyndman visited Moonah Park's 'gym junkies' recently.





## Stellar turnout for clubhouse opening

**R**esidents at Regency Park Retirement Village celebrated the grand opening of their new clubhouse today.

The long-awaited clubhouse at the Churches of Christ Care village provides residents with a central meeting area to enjoy fellowship and leisure activities.

Churches of Christ in Queensland Chief Executive Officer Dr Paul Scully said the clubhouse would be a space for people living in the village to socialise, connect and engage with each other.

“With its activity area, lounge, meeting and consultation rooms and large kitchen, it will be at the heart of village life,” Paul said.

Southern Downs Regional Council Mayor, Cr Tracy Dobie, officially opened the building in front of residents, their friends and family and special guests.

The 99-unit retirement village was finished on time and under budget, and residents will be able to make the most of the facilities and stunning vistas of the surrounding ranges during their Christmas and end-of-year functions.

The 633 square metre space, with a 182 square metre veranda, takes advantage of the views of the range, and is designed to complement and reflect the surrounding villas.



■ Cr Neil Meiklejohn, Les Meiklejohn, David Littleproud MP, Mayor Tracy Dobie, Lawrence Springborg MP, Dr Paul Scully CEO Churches of Christ, Craig Sadler.

“With its activity area, lounge, meeting and consultation rooms and large kitchen, it will be at the heart of village life,

“We are proud to be able to deliver a quality product for our Warwick residents to enjoy.”

Dr Scully said Churches of Christ Care’s construction of the clubhouse was part of their commitment to providing quality services to seniors in the Southern Downs, as it accompanies the construction of a new 128-bed aged care service and community centre on the site.

“Construction is on schedule and if the weather is kind to us, we hope to be opening the new residential aged care service in mid-2018. The community hub plans are also progressing and we will keep you up to date in the months to come,” Paul said.

The leading not-for-profit aged care provider is also completing construction of an extension at their Stanthorpe aged care service, which will provide an additional 65 rooms.

“We are continuing to receive positive feedback from the Warwick and Southern Downs community including local business and health providers and I would like to personally thank Mayor Dobie for her council’s support and for her personal interest in our developments.” ■



## Great figures in our history on display

At Churches of Christ here in Queensland, many great people have been at the forefront of setting us up to be the great movement and organisation we are today.

Here, we have the stories of just a few of these wonderful people who you may not know about. Remember, you can read more about other important figures and happenings in our history in ‘The Church from the Paddock’ volume one and two.

### Harold (1916-1991) and Mary (1913-1986) Finger

Harold and Mary Finger (pictured above) spent many years working in New Hebrides (now known as Vanuatu) despite often difficult conditions.

“We don’t want you here Go home to Australia.”

Mary arrived in Aoba in 1941 to establish a medical service, before Harold arrived in 1942 to “show the people that only in God’s strength could they be victorious but this would still require hard work on their part. The plan was to develop programmes for the complete development of the life of the Church encompassing medical, educational and spiritual needs.”

Harold and Mary spent some 22 years (1942-1957, 1967-1974) working in Vanuatu, and also pioneered new work in Papua New Guinea with Frank Beale.

“...concerned for the health, future and general wellbeing of the people as well as their faith. He established missions, schools, hospitals, churches and even a

conference in his efforts to serve his God and take the love of Christ out into the world.”

### Olive Iris Burdeu (1905-1989)

In 1911, at the tender age of six, Olive Burdeu (Enchelmaier) pictured on page 3, was one of the first Sunday school scholars at the Albion Church of Christ. From an early age, she was heavily involved in church activities, both at Albion and the new church at Kedron (1929).

A quiet achiever and hard worker, she married Clive Burdeu in 1949, and they became a formidable team devoted to the Churches of Christ Social Service Department and the Kenmore Christian College. In 1955 and 1956, she was the President of the State Women’s Conference.

Olive was the classic representation of the unsung hero, making clothes for others, sending boxes to various Aboriginal missions, supporting the Bible Society, and working for years helping others through Meals on Wheels. ▶



### Dorothy Potter (1899-1993)

“Her life has been unusually full of service and usefulness, motivated by her faith in and commitment to God, who in all her busyness has taken priority.” Allan Male.

Dorothy was a champion for the advancement of women, and was described as “one of the most outstanding community leaders in Queensland”.

She was a gifted scholar and musician.

In 1935 she married Eric Potter and the family settled in Redcliffe. It was after moving back to Brisbane in 1947 to care for a relative, that her involvement in Churches of Christ increased.

She was the president of the State Women’s Conference (1951-53), Australian Women’s Fellowship (1953), Federal Women’s Conference (1952-54) and the National Council of Women (1956-60). In 1977, she received the Queen’s Jubilee Medal and was made a life member of the National Council of Women in 1982.



### Herbert George Payne (1877-1954)

Herbert Payne was “a man of grace, integrity and wise counsel... Essential qualities of leadership, particularly for young people.”

Herbert was committed to helping and educating young people in the church, overseeing a number of youth committees, the Bible School and Young People’s Union, and organised the first youth camp to Fingal, NSW, over Christmas 1929-30.

He was the Minister at Albion Church of Christ (1925-35), President of the Federal Conference (1929-30) and President of the State Conference (1933).

He was a prolific writer and accomplished communicator, with a keen interest in the temperance work, which no doubt was strongly encouraged amongst young people.



Herbert Payne was a man of grace, integrity and wise counsel... Essential qualities of leadership, particularly for young people



### Professor Allan Fraser Wilson (1921-2001)

Professor Allan Wilson was a driving force behind the Kenmore Christian College, presiding as the Chairman of the Board from 1969, holding the position for 25 years.

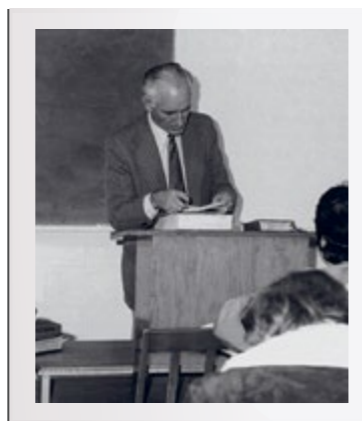
As a professional scientist, Allan was able to integrate his faith and his profession, he was mentored in geology by Sir Douglas Mawson, and they travelled throughout central Australia on camels, completing mineral exploration.

He continued his career as a lecturer and completed his doctorate in the field.

He taught Biblical Archaeology at Kenmore Christian College, and was an Elder at and Chairman of the Kenmore Church of Christ. He was State Conference President in 1989-90.

In 1976, Allan and his wife sold their house and 2.5 acres of land to the college (for a very reasonable price), so that married students could be accommodated on the site.

The impact of Allan’s wise counsel and encouragement to future ministers cannot be underestimated.



Volunteers at the Boonah Hospital, with Community Chaplain Honni Hayton (back row, second from right). Below: Honni Hayton and Leonie Gavioli with the lemon tree the hospital donated to the Boonah Community Garden.

# Volunteers make for more pleasant stay

It can be a bit lonely sitting in hospital to heal. The doctors and nurses do their best to make the stay comfortable but it can be lonely, especially when your family lives far away and is unable to visit.

At Boonah Hospital, social worker Alison Stenzel and Director of Nursing Facility Manager Leonie Gavioli recognised this problem, and partnered with Churches of Christ in Queensland’s volunteers, who now visit patients at the hospital to make their stay a bit more pleasant and less isolated.

For over a year, a small band of volunteers have visited the hospital to provide companionship to patients in hospital.

The volunteers are registered, trained and supported by Community Chaplain Honni Hayton.

The “quiet achievers” support patients in various ways, such as playing cards, doing craft, reading to them, and even taking them out for morning tea at local coffee shops. The volunteers also work closely with the hospital’s Diversional Therapist Pam Cairncross to facilitate activities such as craft and the crowd favourite, Bingo!



*In November, the Boonah Hospital celebrated 40 years in their current location. The occasion was marked with a ‘Past, Present and Future’ themed afternoon tea. Community Chaplain Honni Hayton was invited to the event, and received a beautiful lemon tree to plant at the Boonah community garden. This was to represent the connection the hospital has with the community. In her work as community chaplain, Honni is President of the Boonah Community Garden and also facilitates a volunteer program at the Boonah hospital. “It was lovely to be recognised and included in the hospital’s celebrations in such a significant way, bringing the connections together,” Honni said.*

The program has made a big difference to the patients in the hospital, and it is in need of more volunteers so all week days are covered.

“A friendly face, a warm smile, and cheerful greeting does wonders for our patients,” Honni said. “Too often patients have no visitors and our volunteer’s step-in and help fill the void.”

Alison Stenzel explained the hospital has “patients from other districts who may be in rehabilitation here for several months or waiting for an aged care facility placement”.

“They have no local contacts and there is no public transport from their home locations so they have no one to visit them. They become very lonely and isolated.

“The medical staff do a fantastic job and do their best to make patients’ stays comfortable but they simply do not have the time to interact socially.

“Friendly volunteers make all the difference.” ■

Go to [imaginevolunteering.com.au](http://imaginevolunteering.com.au), call 1300 760 722 or email [volunteers@cofcqld.com.au](mailto:volunteers@cofcqld.com.au) today to find out more about volunteering with Churches of Christ in Queensland.

# { People & Events }

in our communities



### Hymn Fest at Boondall

Boondall Church of Christ held a successful Hymn Fest in October. Rev Allan Male started the twice yearly event, which has continued since his retirement with Pastor Ken Trudgian. The event supported the church's school chaplaincy, with the two school chaplains each receiving \$500 to go towards their work.



### Wedding celebration

Betty and Simon Soros from Golden Age Aged Care Service renewed their wedding vows in front of fellow residents from the service, hostel and retirement village, resident families, staff and volunteers. Betty and Simon met in Townsville in 1964, but it wasn't until 1992 that they first tied the knot.



### Ronald 100

100 years and still going strong! Crows Nest Aged Care Service resident Ronald Ramage celebrated his 100th birthday with his wife Judith by his side.

### Builders donate new carpark to local club

The builders of our new Warwick campus, Total Construction, worked with other organisations in the community to upgrade the carpark at the local Collegian Rugby League Club. The club desperately needed work done to the uneven, pothole-riddled carpark, which was a hazard for pedestrians and vehicles. We are proud to be partnered with the organisation, and thank them for the commitment to the local Warwick community.



### The Mooring's volunteer of the year

The Mooring program at Southport Church of Christ was awarded the Northern Gold Coast Volunteer of the Year Award. Bruce Murray (left) and Hetty Laning (centre) also received individual awards. This has been a real team effort and The Mooring would like to thank all who contributed and help with this wonderful ministry.

### AfMA Fleet Environment Award

Churches of Christ in Queensland was awarded the Fleet Environment Award by the Australian Fleet Management Association, in recognition of our strengthened commitment to the environment through a variety of successful initiatives. Group Manager Procurement, Fleet and Sustainability, Richard Schuster, accepted the award.



### Community care presentation at Bunnings

Redcliffe seniors visited Bunnings Rothwell to find out how to stay safer and more secure in their own homes with a presentation by our Community Care services. They also chatted about Home Assist Secure services, which are available to Queensland pensioners aged over 60. It was a chance to inform attendees of changes to the HAS program, where qualified Seniors can now get up to \$500 in free home maintenance per year, up from \$400.



### Builders experience VDT

Staff from Paynter Dixon, the construction company involved with building our Stanthorpe Aged Care Service, got to experience first-hand what living with dementia is like as they completed the innovative Virtual Dementia Tour. It gave them greater insight into the importance of building design for people with dementia in our services.



### Bribie Island adventures

Residents from our retirement villages love to get out and about. A group 10 from our Bribie Island villages travelled along the Murray River on the Proud Mary Cruise. The last time they saw the mighty Murray, the river was very low. This time they were excited to see it in good health with abundant bird life.



### Farm Hand bowls tournament

On 29 September, we held our first Bowls Tournament in Stanthorpe, raising money for our Farm Hand volunteer program. The innovative "Fast Fours" bowls tournament format ensured fun, quick and socially engaging competition. The Tenterfield Travellers came first, followed by Stanthorpe and the Nambour Cane Cutters.



■ Callam and Evan have been completing work experience at the Kenmore Campus.

## Real world experience

In 2016, Special Education teacher Vicki Taylor from Westside Christian College, contacted Churches of Christ in Queensland about the potential for two of her Year 10 students to be able to complete work experience with us. Since then, Callam and Evan have completed numerous rounds of work experience at the Kenmore Head Office.

For Vicki, developing the program and partnership with Churches of Christ in Queensland arose out of a passion she held for her students to gain real world experience in a work environment before they left school.

Following contact with Board Chair Gary Edwards, Vicki met with members from the Head Office Administration team to establish a six-week program where the boys were shown different parts of the organisation.

This was successful that the boys were welcomed back in 2017 and will be again in 2018.

Vicki has seen the positive benefits that the experience in the work environment has had for the boys, who each have Autistic Spectrum Disorder.

"This program has offered Evan and Callam an opportunity to experience the expectations and responsibilities of a workplace within an organisation that is supportive and accepting of their disabilities. This is something that would not be available to them in many of the more traditional workplaces that may employ their peers," Vicki said.

"Both boys have learned new skills, been challenged to stretch beyond their comfort zones and engage in a functioning work environment. This has helped to reinforce the skills we have been focussing on in class and provided meaningful experiences from which they can draw references."

"Although we are still on a journey, they have definitely improved in confidence, personal organisation, social skills and their ability to be part of a larger team."

Evan said that it has been a great experience, particularly enjoying being active all the time as part of the role.

"I have learned how to look after the gardens and work as part of a team," Evan said.

While not sure what he would like to do when he does finish school at the end of 2018, he is enjoying doing a Certificate II in Automotive Underbody Technology and would one day like to join the defence force.

Callam, who would like to become an author after completing school, enjoyed trying new things.

"It has been really awesome to complete work experience because I like seeing how a business works," Callam said. ■

*The partnership with Westside Christian College's Special Education class is set to continue with more students after Evan and Callam complete school.*

# { Events }

Find us on 

## December

**DECEMBER 25**

Christmas Day

**DECEMBER 26**

Boxing Day

## January

**JANUARY 16-20**

FUSE Camp

## February

**FEBRUARY 14 - MARCH 29**

40 Days of Prayer

## March

**MARCH 8**

International Women's Day

**MARCH 21**

Harmony Day

**MARCH 30**

Good Friday

## April

**APRIL 2**

Easter Sunday

**APRIL 7**

World Health Day

**APRIL 7-9**

L10 Conference

**APRIL 25**

ANZAC Day

## May

Domestic and Family Violence Prevention Month

**MAY 21-MAY 27**

National Volunteers Week

**MAY 26**

National Sorry Day

**MAY 27- JUNE 3**

National Reconciliation Week

## Church Grants 2018

- Does your church have an idea for a mission activity or ministry that needs a kick start?
- Does something at your church property need an upgrade to better serve your mission and vision?
- Do you have an existing mission activity that is connecting with the community and meeting needs and could do with a funding boost?
- Church Grants are here to support you!

As part of our mission to bring the light of Christ into communities, we are passionate about supporting our local church congregations as they reach out to their communities, meet needs and practically demonstrate the good news of Jesus. Centenary Development Foundation has made \$25,000 in grants available to churches in 2018 to support their mission activities, with grants for individuals of up to \$5,000. Information can also be found on the new Centenary Development Foundation website at [cdf.org.au/churchgrants](http://cdf.org.au/churchgrants). Please send your application to [fundraising@cofcqld.com.au](mailto:fundraising@cofcqld.com.au) by 31 January 2018.



Build on THE Foundation  
**Centenary**  
Development Foundation

*Bringing the Light of Christ into communities*

Bringing the light of Christ  
into communities



[cofc.com.au](http://cofc.com.au)

